

INTRODUCING

GRIFFIN 

ABOUT US

When it comes to quality, integrity and reliability, we are recognised as a premier specialist across the property and financial industries. With an established track record of proven industry success and a dedicated team of proficient professionals, our proudly Australian owned company specialises in financial products and project development for investors, residents and commercial businesses.



WHAT WE DO

Through our passion for property, we thrive on introducing, managing and integrating property projects to improve living standards and to establish positive change within local communities.

As an Australian based boutique provider of financial capital services and project development opportunities, we believe in the value of relationships and absolute commitment to integrity and professionalism across all our projects.

We invite you to explore our portfolio to discover the range of projects, both present and past, which identify our unique ability to deliver exceptional, high quality properties to the market.



GREG DEVINE

Founder & CEO

Greg Devine has played an integral role in the financial planning industry for over 40 years, with his career beginning initially in the banking industry before leading him into the property market. With an unfaltering passion towards capital raising and business development, Greg comes from an impressive background in building and managing several financial services, such as Bain & Company, Deutsche Bank and Godfrey Pembroke.

Having established international recognition as the leading director of Griffin Group, Greg has most certainly made his mark on the property and equity sectors. He empowers and supports his team to raise capital whilst building successful projects and establishing valuable client relationships.





ASTORIA

4 TWEEDDALE ROAD

The Astoria is located in a prime location a mere one minute walk to the riverside edge, on the mouth of the Swan River and Canning Bridge Road.

Astoria is a deluxe boutique project of six townhouses spanning three to four levels offering spacious floor plans with between 220 and 250 square meters. Each townhouse features open plan kitchen, living and dining, lift access, laundry, separate WC, ground floor garden, rooftop terrace and entertaining area.

LOCATION: Applecross, WA

TOTAL PROJECT VALUE: \$17,000,000

DEVELOPMENT TYPE: Residential

DWELLINGS: 6 Townhouses



ASTORIA







QUALIA

RESIDENCES

BRIGHTON

49-51 WARLEIGH GROVE

The Qualia residences in Brighton is located in a highly sought after and prestigious area of Melbourne. These high-end and sophisticated residences boast a luxurious living experience with direct access to each residence.

This boutique development comprises five luxurious three bedroom, three bathroom residences spanning over three levels. The fifth apartment is a penthouse which spreads out over the whole top floor of the development complete with a spacious wrap around balcony.

LOCATION: Brighton, VIC

TOTAL PROJECT VALUE: \$18,650,000

DEVELOPMENT TYPE: Residential

DWELLINGS: 5 Apartments



QUALIA
RESIDENCES
BRIGHTON







HASTINGS

HAWTHORN EAST

380 RIVERSDALE ROAD

Located in the one of Melbourne's most desirable suburbs in Hawthorn East, Hastings is a boutique development of nine spacious two & three bedroom apartments designed to suit the needs of the local market. This development will be highly sought as it is located on a corner block allowing an abundance of natural light to filter through the windows around the development.

Hawthorn East offers a cosmopolitan lifestyle with a blend of fine dining options, characterful cafés, top-notch boutiques, prestigious schools and lush green spaces right on your doorstep. With the city centre only twenty minutes away and easy access to numerous tram and train lines, commuting will be a breeze.

LOCATION: Hawthorn East, VIC

TOTAL PROJECT VALUE: \$16,860,000

DEVELOPMENT TYPE: Residential

DWELLINGS: 9 Apartments



HASTINGS

HAWTHORN EAST







NOUVEAU

NEDLANDS

91 BROADWAY

Nouveau is Griffin's first foray into Nedlands, a prestigious and highly desired suburb to reside in Perth. The art deco inspired building designed by maarch* architects features 17 apartments with a blend of two & three bedroom layouts offering boutique style living to a range of demographics.

Residents will enjoy being minutes from the heart of Nedlands along Broadway with cafe culture and dining options to impress. Alternatively, residents can take a short stroll down to the picturesque foreshore which is perfect for unwinding after a busy day to take in sunset views across to the Perth CBD.

LOCATION: Nedlands, WA

TOTAL PROJECT VALUE: \$24,350,000

DEVELOPMENT TYPE: Residential & Commercial

DWELLINGS: 17 Apartments & 1 Commercial



NOUVEAU

NEDLANDS







73 LOCKHART STREET

Meaning the brightest star in a constellation, Lucida is a shining example of modern living at its finest. Featuring an elegant mixture of two spacious townhouses with three bedrooms and two bathrooms and 12 apartments with one, two and three bedroom layouts, Lucida Como offers something to suit every lifestyle.

Designed by award winning architects CAPA, this boutique development is the epitome of style with picturesque views out to the Swan River and city skyline from its private cul-de-sac in sought after Como.

LOCATION: Como, WA

TOTAL PROJECT VALUE: \$12,340,000

DEVELOPMENT TYPE: Residential

DWELLINGS: 2 Townhouses & 12 Apartments



LUCIDA

LUXURY RESIDENCES COMO









1 ENDERBY CLOSE

Boasting a blend of quality five townhouses and nine bright and breezy deluxe apartments, acclaimed CAPA Architects have designed Coastal Edge to mirror the soothing serenity of the nearby sand and sea. A boutique development of contemporary elegance, each apartment and townhouse is offset with quality finishes, soothing interiors and a lush communal space to gather with loved ones.

LOCATION: North Coogee, WA

TOTAL PROJECT VALUE: \$16,170,000

DEVELOPMENT TYPE: Residential

DWELLINGS: 5 Townhouses & 9 Apartments









17

ABODE

COMO

17 CLYDESDALE STREET

Framed by blossoming Jacarandas and opposite beautiful parklands, Abode Como is a South Perth sanctuary which embraces serene living in a luscious setting.

A boutique development comprising two townhouses and 12 apartments, it's perched in a peaceful and leafy pocket of Como where landscaped gardens and green space combine to create an oasis of gentle elegance.

LOCATION: Como, WA

TOTAL PROJECT VALUE: \$9,440,000

DEVELOPMENT TYPE: Residential

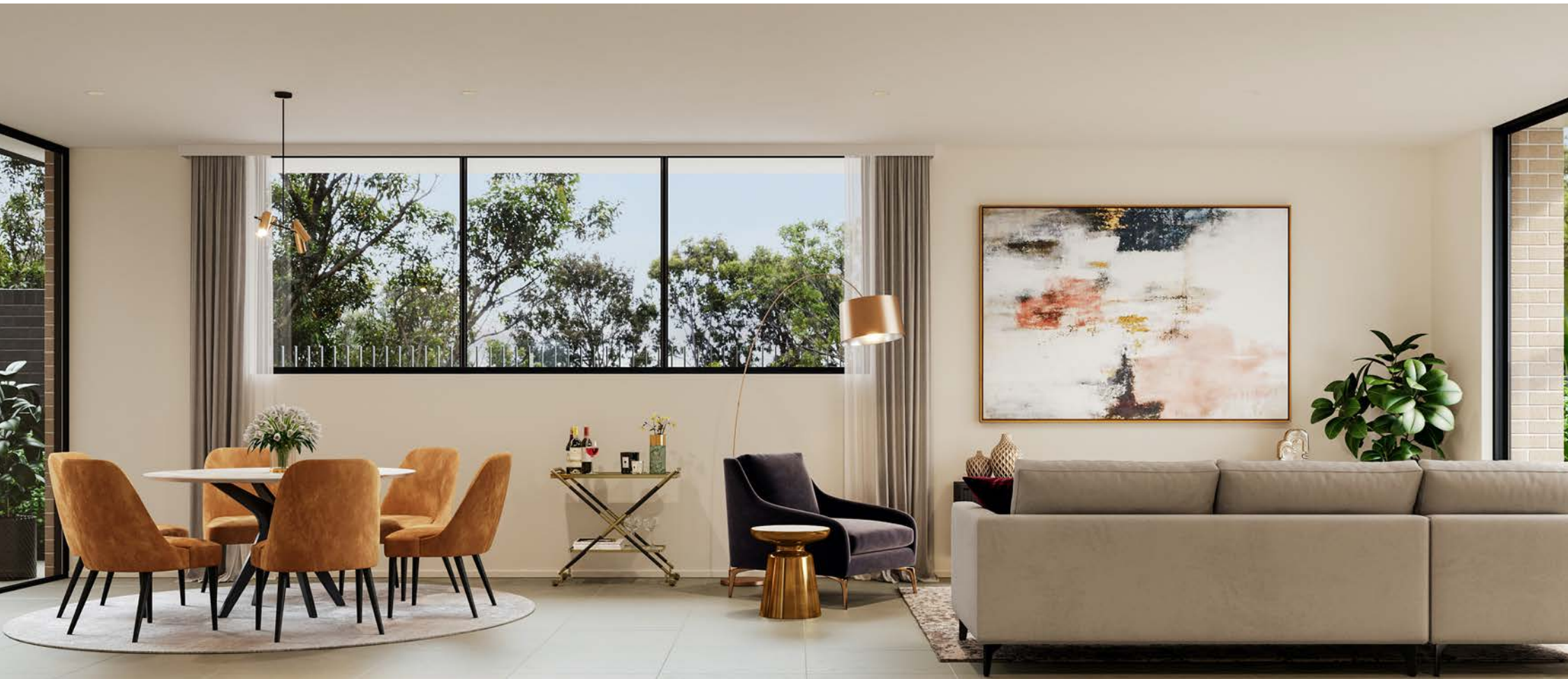
DWELLINGS: 2 Townhouses & 12 Apartments



ABODE

COMO









422 CANNING HIGHWAY

Cube on Canning aspires to set a new benchmark for sustainable, simplistic and restorative apartment living with 14 exclusive apartments. Textures, patterns and clean-lined details are partnered with robust and durable materials to ensure a lasting quality for its owners and the community. Inspired by the lush adjacent parklands, it also centres around an open landscaped core to enhance light and bright internal spaces and gentle cross breezes.

LOCATION: Attadale, WA

TOTAL PROJECT VALUE: \$12,470,000

DEVELOPMENT TYPE: Residential & Commercial

DWELLINGS: 14 Apartments & 1 Commercial









MANHATTAN

65 CANNING BEACH ROAD

Nestled right at the river's edge in Applecross lies one of Perth's most sophisticated and premium addresses. Manhattan Residences offer sweeping views across the Swan River, Kings Park, Perth CBD and out to the Darling Scarp.

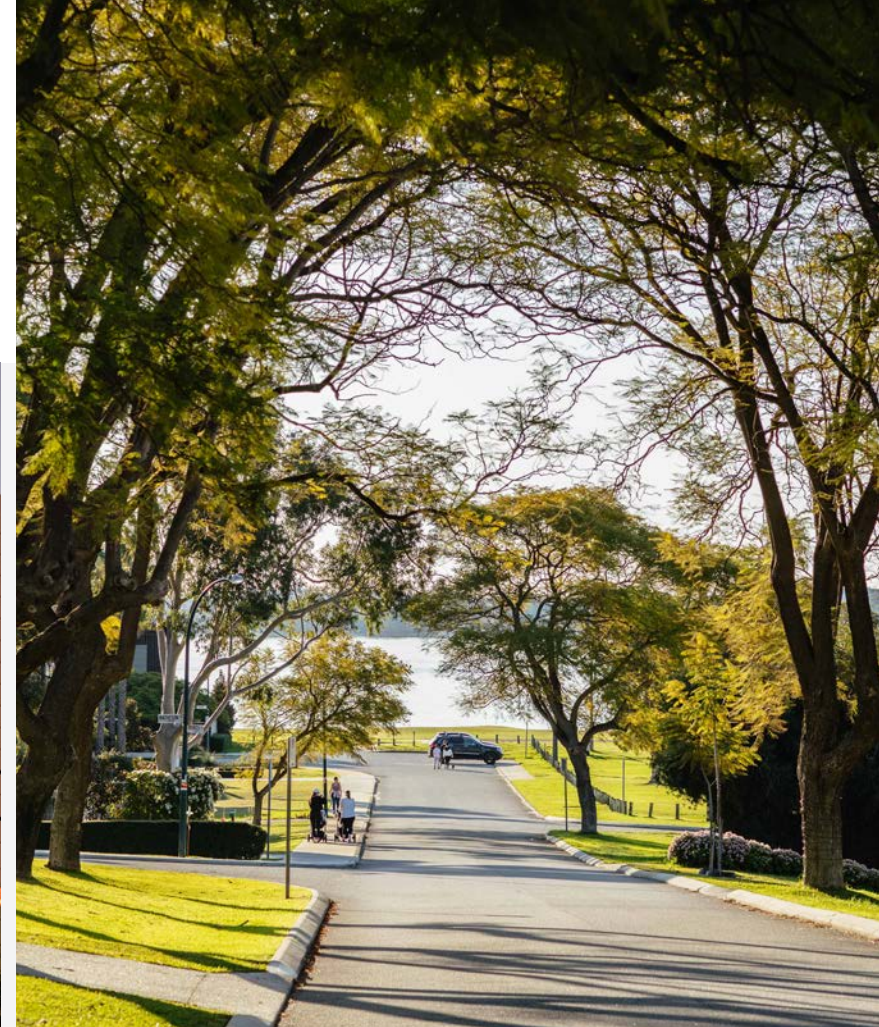
Limited to only five exclusive full-floor apartments, each residence has over 200sqm of living space with its own expansive kitchen and scullery, as well as a personal bar area and wine fridge. Extensive landscaping and stunning architectural elements will also ensure you're always connected to nature's endless beauty.

LOCATION: Applecross, WA

TOTAL PROJECT VALUE: \$27,180,000

DEVELOPMENT TYPE: Residential & Commercial

DWELLINGS: 5 Apartments & 1 Commercial







108-110 HOWARD STREET, PADDINGTON, QUEENSLAND

In a commanding position, in one of Paddington's premier streets. 108-110 Howard Street is a boutique development comprising of four individually titled homes. 2 km from the CBD and within walking distance of Paddington's famed dining and shopping precincts.

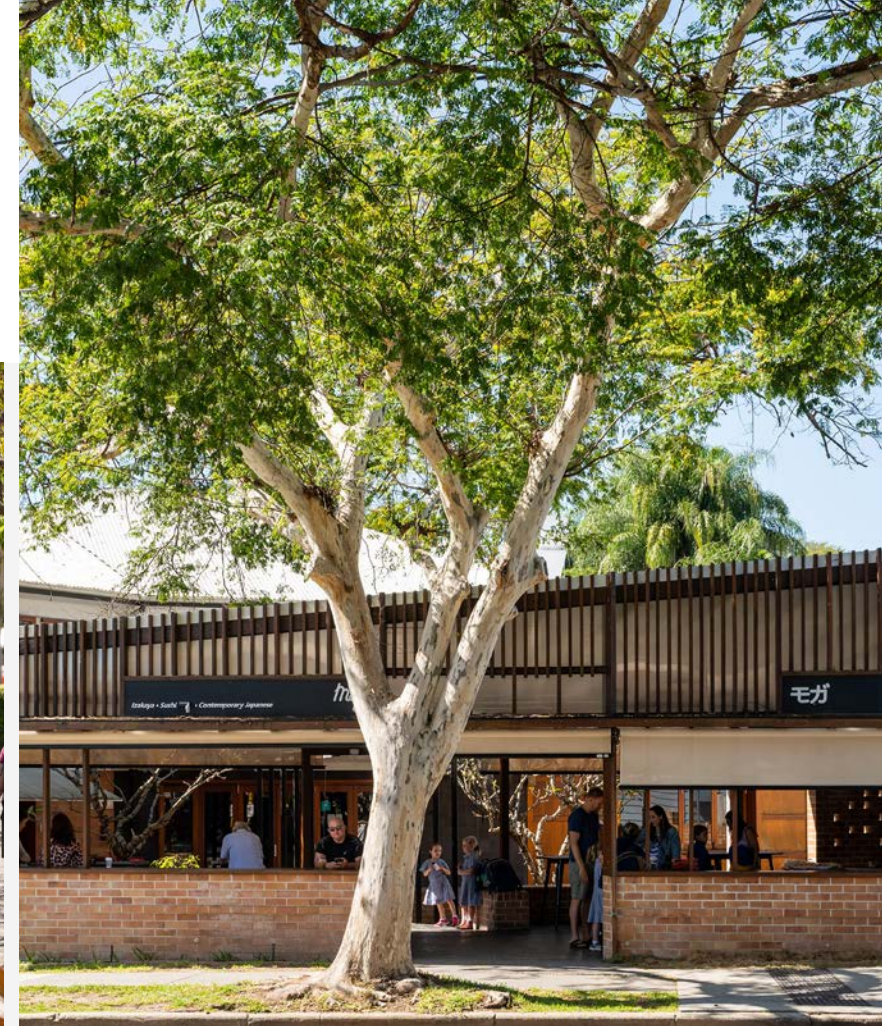
Paddington, a charming suburb in Queensland, Australia, offers a unique blend of urban convenience and natural beauty, making it a highly sought-after place to call home. Nestled just a stone's throw from Brisbane's bustling city center, Paddington boasts an array of benefits for its residents. Its tree-lined streets and picturesque colonial-era architecture lend a sense of historic charm.

LOCATION: Paddington, QLD

TOTAL PROJECT VALUE: \$11,000,000

DEVELOPMENT TYPE: Residential

DWELLINGS: 4 Homes





COTERIE

COMO

12 MCDOUGALL STREET

Nestled in the heart of Como, Coterie offers a sophisticated living experience. With 18 thoughtfully designed apartments, including one, two, and three bedroom layouts, Coterie provides a living solution tailored to suit diverse lifestyles.

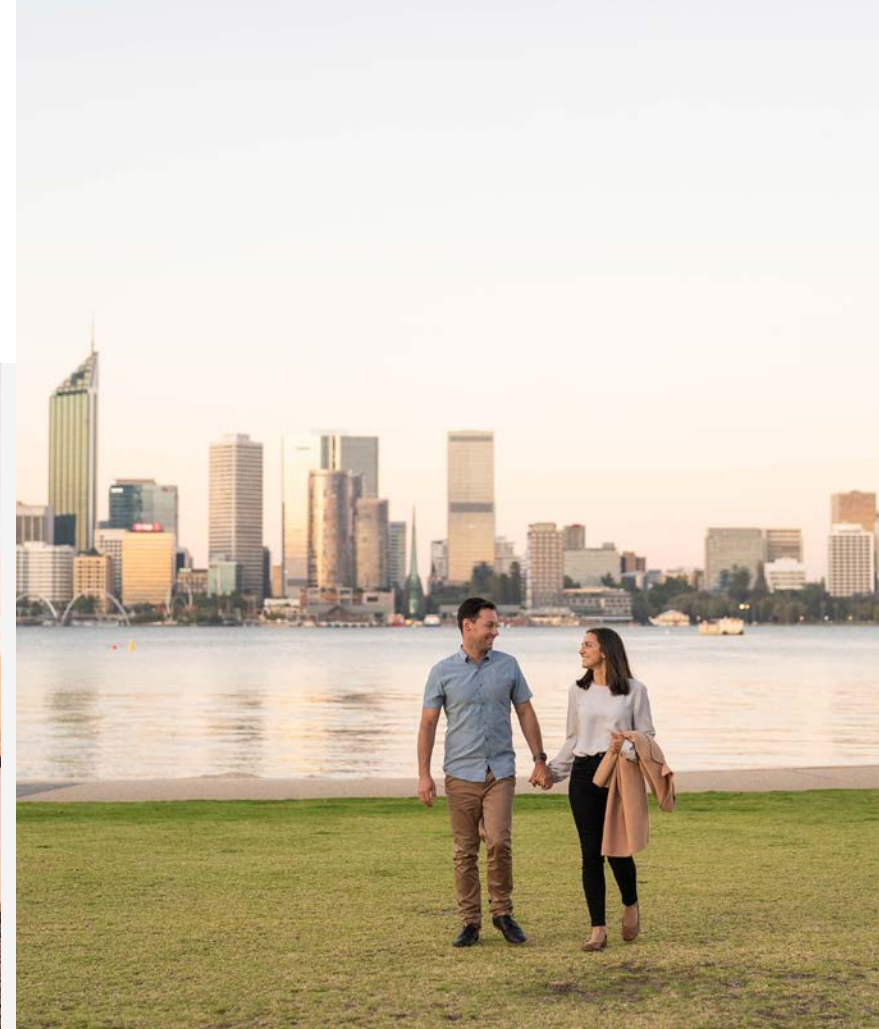
Coterie embraces functional design for hassle-free inner-city living, making it an ideal "lock and leave" destination. The standout feature is the private rooftop terrace, offering residents stunning panoramic views of Perth's cityscape, creating the perfect space for relaxation and entertainment.

LOCATION: Como, WA

TOTAL PROJECT VALUE: \$15,750,000

DEVELOPMENT TYPE: Residential

DWELLINGS: 18 Apartments





WESTWOOD

NEDLANDS

135 BROADWAY

WestWood resides just up the road from Nouveau, Griffin's first development to hit Nedlands. Another stunning boutique development designed by maarch* architects featuring 16, two & three bedroom apartments and a spacious rooftop three bedroom penthouse.

This development comes with a communal entertainment area with each apartment enjoying panoramic views across the Perth skyline. Westwood is located in a prime living location for the desired West Australian lifestyle within close proximity to amenities and the Perth CBD.

LOCATION: Nedlands, WA

TOTAL PROJECT VALUE: \$18,750,000

DEVELOPMENT TYPE: Residential & Commercial

DWELLINGS: 16 Apartments & 1 Commercial





CALIBRE *Glenelg*

22 COLLEY TERRACE

Calibre will be the newest development to hit the Colley Terrace strip in over 19 years. This architecturally designed building, spanning nine levels with a mix of one, two and three bedroom apartments, will offer residents sweeping ocean views through the infamous pine trees.

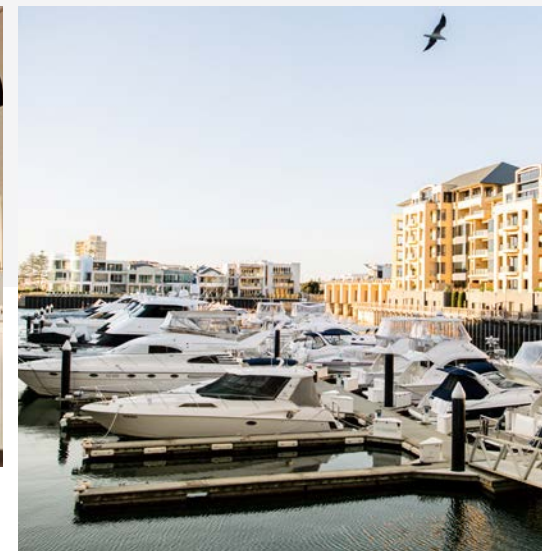
Glenelg is easily accessible from Adelaide City by tram and is renowned for its pristine coastline, rich heritage, trendy eateries, bustling retail strip, sidewalk cafés and stunning sunsets.

LOCATION: Glenelg, SA

TOTAL PROJECT VALUE: \$18,580,000

DEVELOPMENT TYPE: Residential

DWELLINGS: 11 Apartments





The Henry

1 GLENBURNIE TERRACE

The Henry is a contemporary urban development conveniently situated close to Adelaide's tram line, perfectly positioned between the coast and the city. Featuring 32 well-designed two and three bedroom apartments across five levels, The Henry offers urban living at its finest, complete with secure underground parking.

Within a short walk, residents have access to a major shopping centre, and in just five minutes, they can reach the popular Glenelg beach as well as the enjoy the convenience of an easy tram ride connecting to Adelaide's CBD.

LOCATION: Plympton, SA

TOTAL PROJECT VALUE: \$26,270,000

DEVELOPMENT TYPE: Residential

DWELLINGS: 32 Apartments





MOSMAN

11A MUSGRAVE STREET

Perched high on an elevated site overlooking the picturesque banks of Sydney Harbour, our luxury development in Mosman features three standalone townhouse, spanning three levels that have been thoughtfully designed for modern comfort and style.

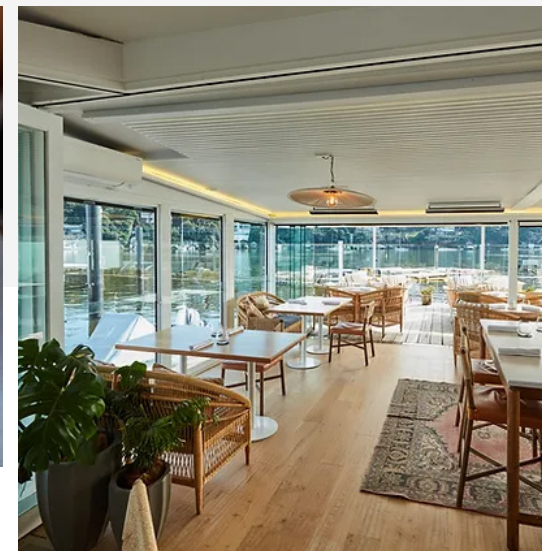
Each townhouse savours breathtaking views of the iconic Sydney Harbour with three spacious bedrooms, two bathrooms and a separate powder room. Just a stone's throw away is miles of boutique shopping, charming cafes, exquisite restaurants, and artisan delicatessen, ensuring you'll experience the epitome of convenience and sophistication.

LOCATION: Mosman, NSW

TOTAL PROJECT VALUE: \$24,000,000

DEVELOPMENT TYPE: Residential

DWELLINGS: 3 Townhouses





EVERGREEN

16 DAVILAK STREET

Nestled in the heart of Como on the corner of Davilak and Clydesdale St opposite Neil McDougall Park, Evergreen is Griffin's latest development to grace Como. Designed with downsizers in mind, this stunning eight storey development offers spacious integrated indoor and outdoor living.

With a desired blend of 18, two and three bedroom residences each with two bathrooms, Evergreen comes complete with a stunning private rooftop terrace for residences with views across to the city.

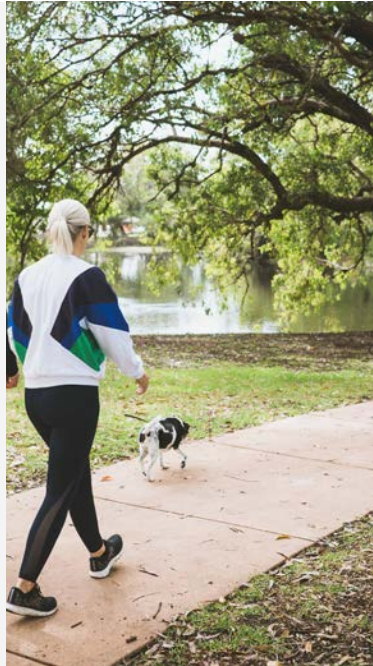
This development will be a much-needed addition to Como satisfying the high demand for spacious downsizer living options.

LOCATION: Como, WA

TOTAL PROJECT VALUE: \$16,970,000

DEVELOPMENT TYPE: Residential

DWELLINGS: 18 Apartments





BEACH RD

19 - 21 BEACH ROAD

Situated in one of the Sunshine Coast's most sought after suburbs, Beach Road Coolum is minutes walk from Coolum beach. This prime location will offer outstanding views and a relaxed beach lifestyle surrounded by established amenities and infrastructure.

Designed by Jessica Hart architecture, this breezy coastal development will offer 17, two and three bedroom apartments with a spacious ground floor communal space area.

LOCATION: Coolum, QLD

TOTAL PROJECT VALUE: \$27,220,000

DEVELOPMENT TYPE: Residential

DWELLINGS: 17 Apartments





469

COFFEE Get Up Fox

LIBERTY

469 WILLIAM STREET

This art deco inspired project offers a commercial space and 12 apartments with a range of configurations designed to cater to mixed demographics with a landscaped communal outdoor rooftop area for future tenants to enjoy.

Liberty is in a prime city location on William Street, a main artery that leads through Northbridge straight into the Perth CBD. It is situated amongst one of Perth's most well-known entertainment precincts and close to Northbridge's China Town.

LOCATION: Perth, WA

TOTAL PROJECT VALUE: \$15,890,000

DEVELOPMENT TYPE: Residential & Commercial

DWELLINGS: 12 Apartments & 1 Commercial





STONE ST

STONE STREET

The development offers eight apartments spanning eight floors. The site has two street frontages with the first facing onto leafy Stone St and the other onto Melville Beach Parade which overlooks the Swan River.

The first floor will be a two bed, two bathroom apartment facing onto Stone St, the other seven floors will be dedicated to one luxury apartment per floor with three bedrooms, three bathrooms and a focus on the living area which will have sweeping views of the Swan River from Kings Park across to Crawley Bay Nedlands and around to Applecross.

LOCATION: South Perth, WA

TOTAL PROJECT VALUE: \$23,250,000

DEVELOPMENT TYPE: Residential

DWELLINGS: 8 Apartments





SUKHA

30 SACKVILLE TERRACE

Sukha is located in a prime location in Scarborough minutes from the beach and opposite Abbett Park Reserve.

The development's design on the long block maximises the site's potential with six townhouses set out in pairs with three bedrooms, three bathrooms designed to step up the site.

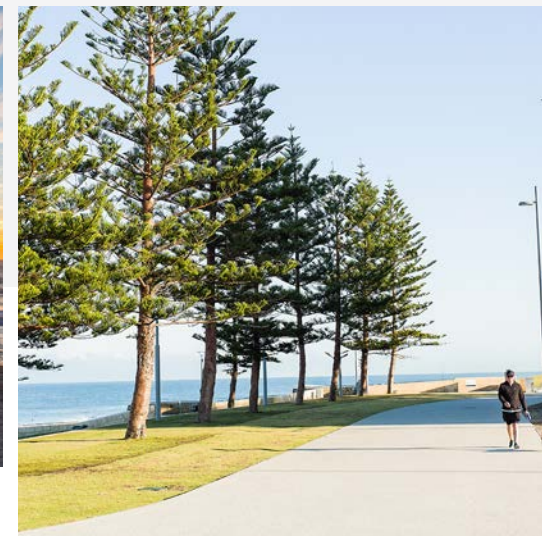
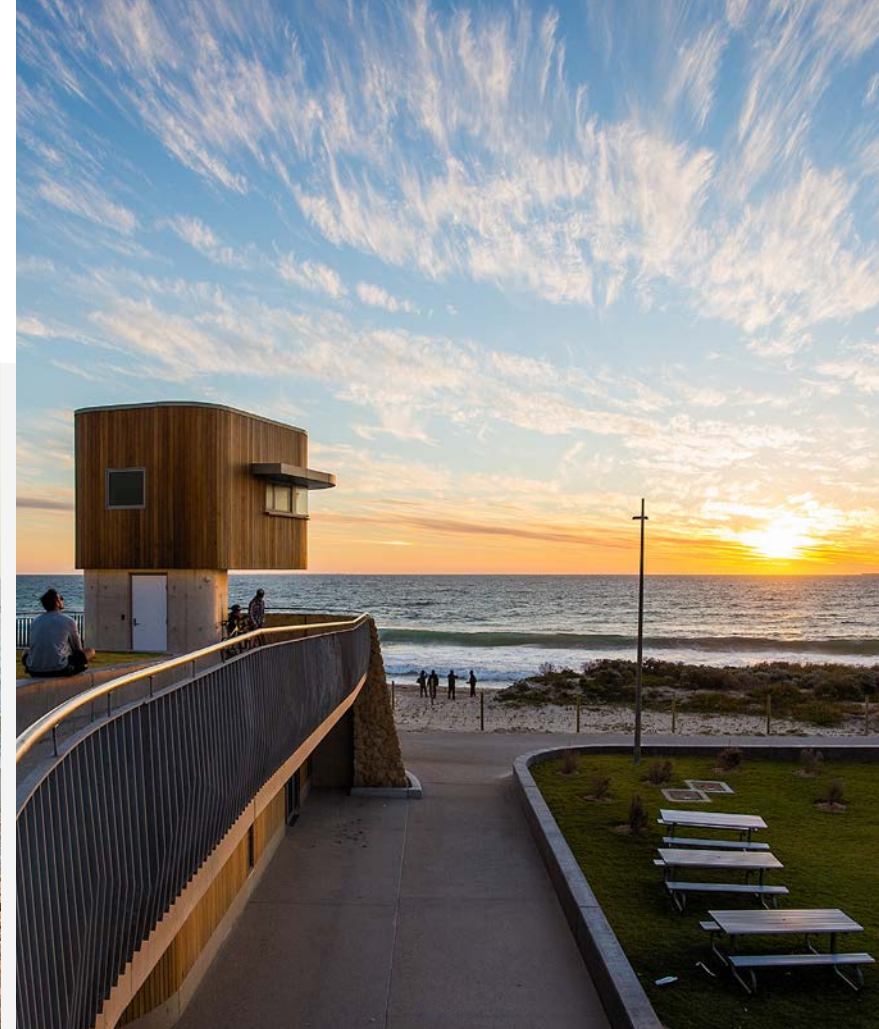
Connected by a common driveway, the townhouses span over two floors and offer functional and spacious living layouts, landscaped private open space and balcony views over the neighbouring parklands with direct lift access and two parking bays per residence.

LOCATION: Scarborough, WA

TOTAL PROJECT VALUE: \$9,160,000

DEVELOPMENT TYPE: Residential

DWELLINGS: 6 Townhouses





97 South Perth Esplanade

SOUTH PERTH

97 SOUTH PERTH ESPLANADE

Nestled along the prestigious Esplanade in South Perth, our latest development project redefines modern luxury living. Situated at 97 The Esplanade, this prime location offers breathtaking views of the Swan River and embraces the essence of waterfront living.

Overlooking the lush greenery of South Perth and the tranquility of the river, this development captures the essence of a privileged lifestyle.

LOCATION: South Perth, WA

TOTAL PROJECT VALUE: \$60,000,000

DEVELOPMENT TYPE: Residential

DWELLINGS: 5 Apartments







FLOURISH CAMBERWELL

437 CAMBERWELL ROAD

Flourish is a boutique collection of only 11 apartments with spacious two and three bedroom floorplans. Located in Camberwell's most esteemed and naturally rich pockets, this architecturally-designed residential development boasts considered architecture, refined interiors and abundantly lush landscaping.

Flourish's facade pays homage to its historically rich Camberwell locale. Classic materials including masonry brick and timber intertwine with a striking asymmetrical form to foster a perfect balance between the past and present.

LOCATION: Camberwell, VIC

TOTAL PROJECT VALUE: \$14,430,000

DEVELOPMENT TYPE: Residential

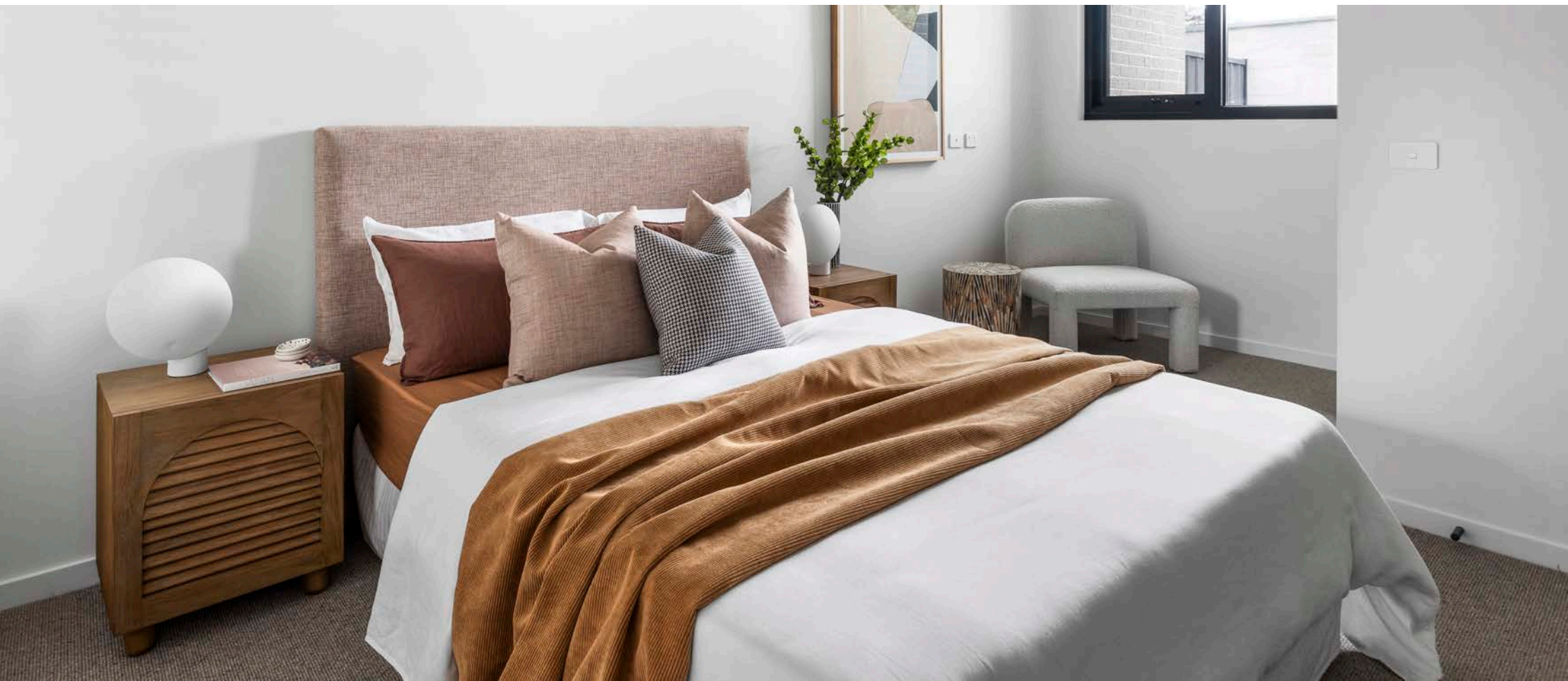
DWELLINGS: 11 Apartments

COMPLETED: 2023



FLOURISH CAMBERWELL







ONLY 5 LEFT!

LOFT HAUS

Your new chic Leedserville address... Move in Q3!

2 & 3 bedrooms from \$449,000 with low strata fees, spacious floor plans, deluxe finishes and 2 car bays

Caroline Bicknell 0473 331 800
lofthaus.com.au

GRIFFIN & CARR

187

LOFT HAUS



187 LOFTUS STREET

Primely positioned on an elevated site in the inner-city suburb of Leederville, Loft Haus apartments offer connected urban living with stunning city views, minutes from one of Perth's most popular dining and retail strips.

Thoughtfully designed around a landscaped central courtyard where residents can socialise or relax, this boutique three-storey development features 13 apartments and two penthouses with modern dual-aspect orientations, spacious open-plan layouts and luxurious high-quality finishes.

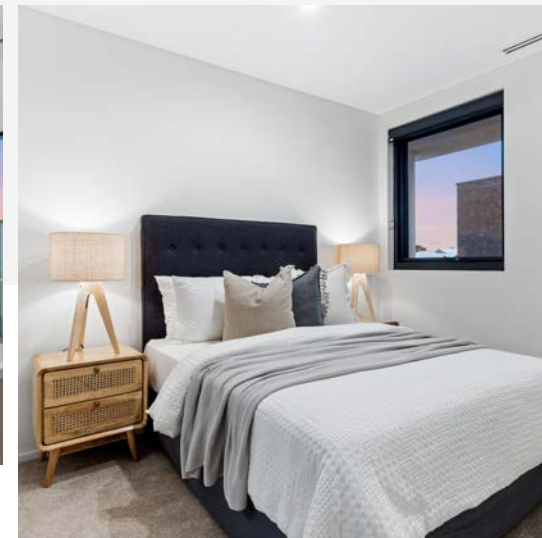
LOCATION: Leederville, WA

TOTAL PROJECT VALUE: \$9,860,000

DEVELOPMENT TYPE: Residential

DWELLINGS: 15 Apartments

COMPLETED: 2022



LOFT HAUS | 









THE EMBANKMENT

AT RIVERHAVEN

36 KEEHNER ENTRANCE

Nestled near the banks of the Canning River, this exclusive enclave within Riverhaven Estate features 19 modern house and land packages showcasing the latest in smart, space-saving design.

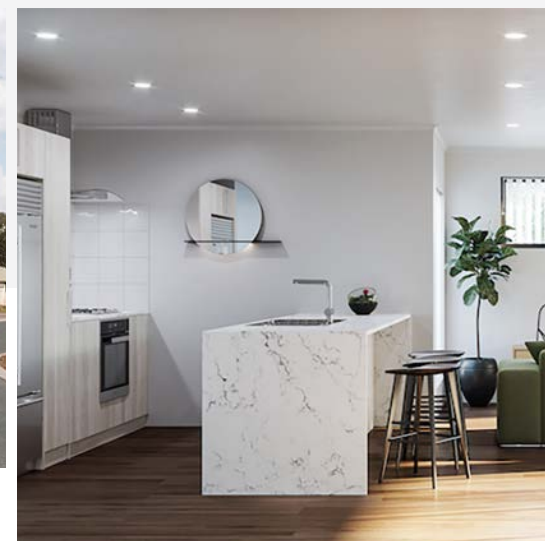
Set amongst peaceful natural surrounds, the Embankment estate is close to schools, shops, cafés, restaurants, parks, bushland reserves, medical facilities and the train station

LOCATION: Butler, WA

TOTAL PROJECT VALUE: \$7,810,000

DEVELOPMENT TYPE: Residential

DWELLINGS: 19 Houses





152

BOOSTER CABINET
BEHIND WALL

FIRE WATER SUPPLY
BACKFLOW PREVENTION

FIRE WATER SUPPLY
BACKFLOW PREVENTION

BOOSTER CABINET

BOOSTER CABINET

BOOSTER CABINET

BOOSTER CABINET

BOOSTER CABINET

BOOSTER CABINET

BOOSTER CABINET

BOOSTER CABINET

BOOSTER CABINET

BOOSTER CABINET

BOOSTER CABINET

BOOSTER CABINET

BOOSTER CABINET

BOOSTER CABINET

BOOSTER CABINET

BOOSTER CABINET



152 SCARBOROUGH BEACH ROAD

Designed to be grounded within its coastal location, The Residence is a contemporary combination of beachside inspired materials. The building comprises 14 exclusive apartments over three floors topped with a spacious rooftop garden deck for the benefit and enjoyment of all residents. The striking peaked roof embodies the form of a wave breaking on the shore and is designed to maximise natural light flowing into the central courtyard and to encourage ventilation across the development.

LOCATION: Scarborough, WA

TOTAL PROJECT VALUE: \$8,887,000

DEVELOPMENT TYPE: Residential

DWELLINGS: 14 Apartments

COMPLETED: 2022









11

P
IP
FIRE
HOBBS

HYDRAULIC
HOISTING
EQUIPMENT

TCR J 382



11 MONEY STREET

Reside on Money is a boutique development of 22 apartments, architecturally designed to complement the character of the streetscape with a fusion of concrete render, heritage face brick, timber cladding, glass balustrades, lush planters and laser-cut metal screens. This modern Northbridge development is a leader in its field with the inclusion of cutting-edge energy saving technology.

LOCATION: Perth, WA

TOTAL PROJECT VALUE: \$14,660,000

DEVELOPMENT TYPE: Residential & Commercial

DWELLINGS: 22 Apartments & 2 Commercial

COMPLETED: 2022

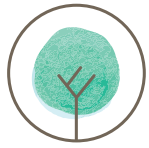








 PARKVIEW



PARKVIEW

18 MCDOUGALL STREET

Parkview Como, is a stunning, architecturally designed, boutique development featuring 14 exclusive apartments. Nestled in a supremely central location, Parkview capitalises on the lush greenery this suburb is renowned for, draped against the backdrop of the picturesque parklands and thriving reserves that dominate the Como landscape.

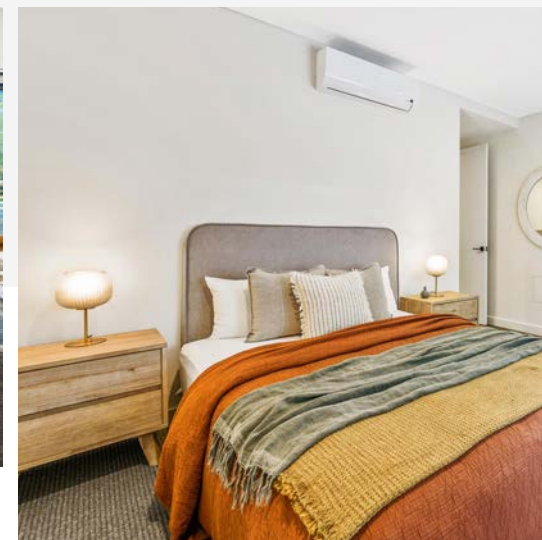
LOCATION: Como, WA

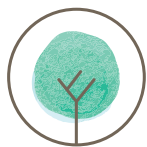
TOTAL PROJECT VALUE: \$9,810,000

DEVELOPMENT TYPE: Residential

DWELLINGS: 14 Apartments

COMPLETED: 2022





PARKVIEW







204 WALCOTT

204 WALCOTT STREET

204 Walcott is an urban lifestyle of sophistication and modern culture, within an exciting central hub of inner-city vibrancy. Situated on the famous strip of Walcott Street, this landmark corner site offers stunning views of the Perth CBD skyline.

LOCATION: Menora, WA

TOTAL PROJECT VALUE: \$8,018,000

DEVELOPMENT TYPE: Residential & Commercial

DWELLINGS: 9 Apartments & 5 Commercial

COMPLETED: 2020



204 WALCOTT







one54

T U A R T

154 BANKSIA STREET

One54 Tuart presents the perfect blend of stylish and functional home living, thanks to deluxe finishes and a smart space-saving design – perfectly suited to families and young professionals. Each town home ranges in size from 220 to 250 square metres, with residents presented with the opportunity to select from a series of colour schemes.

LOCATION: Tuart Hill, WA

TOTAL PROJECT VALUE: \$9,180,000

DEVELOPMENT TYPE: Residential

DWELLINGS: 15 Townhouses

COMPLETED: 2021







KINGSWOOD BOULEVARD

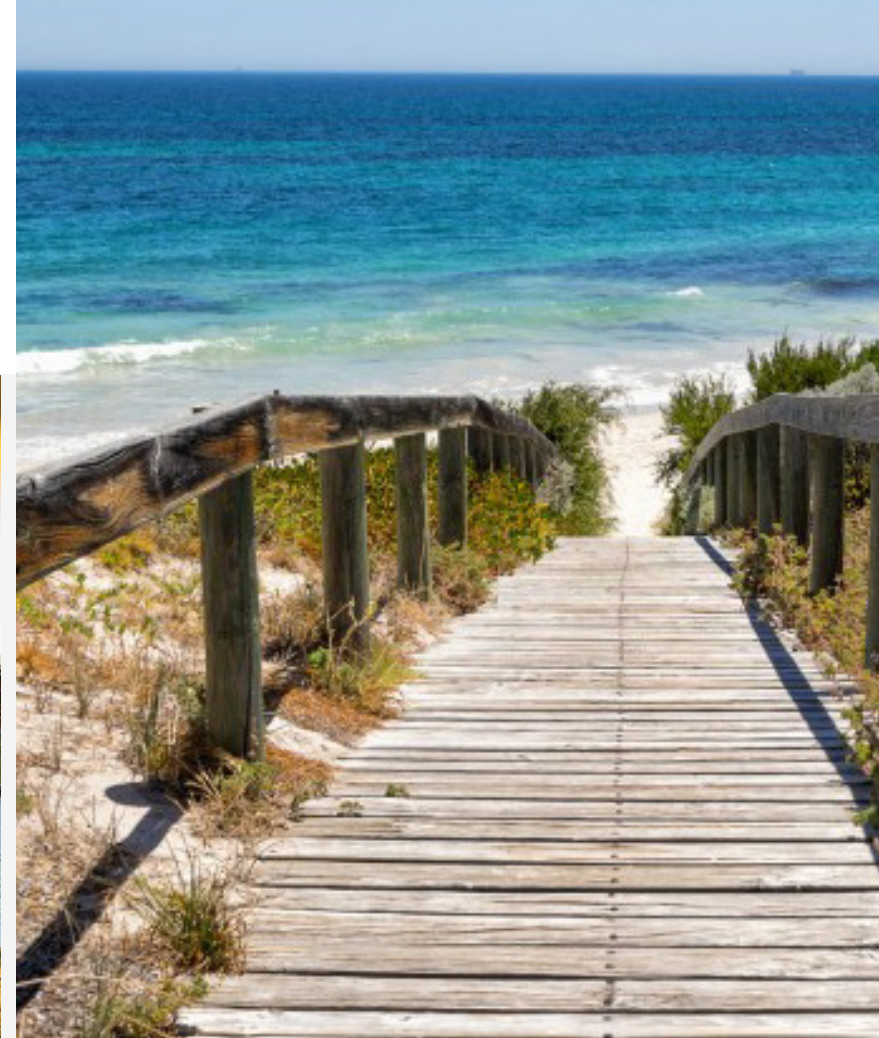
Butler Medical Centre, located in the heart of one of WA's fastest growing northern suburbs, is an architecturally designed Medical and Commercial complex located on Kingswood Boulevard in Butler. Boasting a major child-care centre and general practice, the Butler Medical Centre offers additional commercial space for medical and business professionals alike.

LOCATION: Butler, WA

TOTAL PROJECT VALUE: \$6,760,000

DEVELOPMENT TYPE: Medical Centre

COMPLETED: 2019







9 ROCKINGHAM ROAD

The Hamilton Hill Health Centre is located on Rockingham Road in Hamilton Hill and is scoped to be a mixed use two-storey development. The ground floor is to include a coffee shop, lobby and a chemist with the first floor to have a foyer, reception, office and administration, treatment room, nurses office, board room, staff room and seven medical consulting rooms.

LOCATION: Hamilton Hill, WA

TOTAL PROJECT VALUE: \$5,285,000

DEVELOPMENT TYPE: Medical Centre

COMPLETED: 2020





MILL POINT RD

191 & 193 MILL POINT ROAD

Griffin's 191 & 193 Mill Point Road developments sit in the prime position opposite the Perth City skyline on the riverside drive road and parklands that wraps around the Swan River in South Perth. These developments with priceless uninterrupted 180 degree views of the River and Perth City skyline.

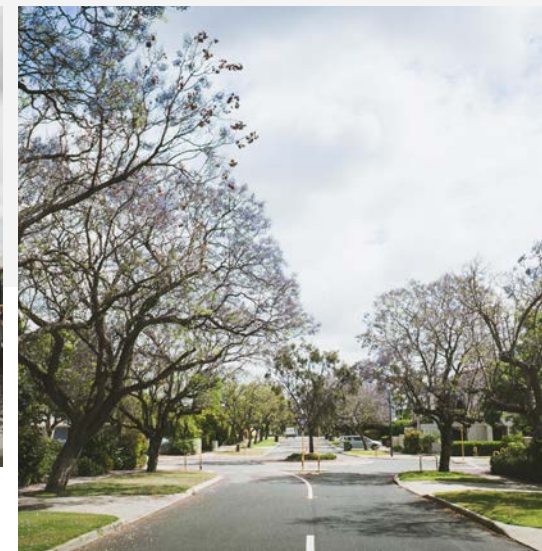
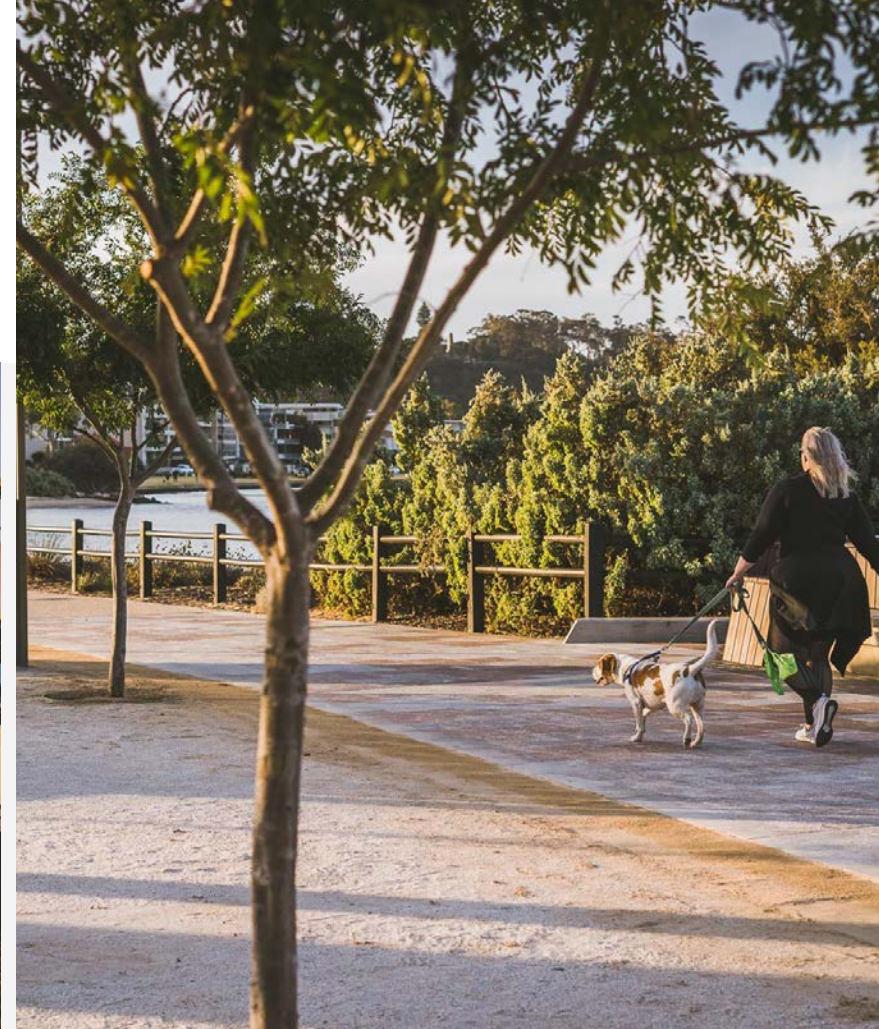
Designed by award winning architects Doepel Marsh, the two boutique developments offer five spacious apartments with four, three bedroom, three bathroom on the first two levels and an indulgent four bedroom, four bathroom penthouse spanning the complete top level of the development.

LOCATION: South Perth, WA

TOTAL PROJECT VALUE: \$18,400,000 each

DEVELOPMENT TYPE: Residential

DWELLINGS: 5 Apartments each





GRIFFIN PROJECTS



COMPLETED PROJECTS

Butler Medical Centre, Butler WA
Flourish, Camberwell VIC
Parkview, Como WA
Hamilton Hill Medical Centre, Hamilton Hill WA
Loft Haus, Leederville WA
Embankment, Martin WA
204 Walcott, Menora WA
Reside on Money, Perth WA
The Residence, Scarborough WA
One54 Tuart, Tuart Hill WA
191 Mill Point Rd, South Perth WA
193 Mill Point Rd, South Perth WA

UNDER CONSTRUCTION

Abode, Como WA
Lucida, Como WA
Calibre, Glenelg SA
Hastings, Hawthorn East VIC
Nouveau, Nedlands WA
Coastal Edge, North Coogee WA
Howard St, Paddington QLD
Beach Rd, Coolum QLD

PROJECTS COMING SOON

Manhattan, Applecross WA
Howard St, Paddington QLD
Coterie, Como WA
Evergreen, Como WA
Musgrave St, Mosman NSW
Westwood, Nedlands WA
The Henry, Plympton SA
Sukha, Scarborough WA
Stone St, South Perth WA
97 South Perth Esplanade, South Perth WA
Astoria, Applecross WA
Qualia, Brighton VIC
Liberty, Perth WA
Cube on Canning, Attadale WA





griffin-group.com.au | G2, 204 Walcott Street, Menora WA 6050 | 08 9221 1144 | info@griffin-group.com.au