

BASEMENT FLOOR PLAN
1:100 @ A1 / 1:200 @ A3

AREAS - L1 - L2

APARTMENT NO	FLOOR AREA	BAL AREA	APT STORE	CPARK STORE
APT 1.01 (2B)	99 m ²	11 m ²	6.0 m ³	2.1 m ³
APT 1.02 (2B)	82 m ²	11 m ²	6.0 m ³	2.1 m ³
APT 1.03 (3B)	118 m ²	15 m ²	14.7 m ³	2.1 m ³
APT 1.04 (2B)	78 m ²	11 m ²	7.4 m ³	2.1 m ³
APT 1.05 (2B)	83 m ²	11 m ²	6.2 m ³	2.1 m ³
APT 1.06 (2B)	87 m ²	11 m ²	6.0 m ³	2.1 m ³

TOTALS 547 m² 70 m² 39.1 m³ 22.8 m³

* INC CORRIDOR STORAGE

AREAS - L3 - L4

APARTMENT NO	FLOOR AREA	BAL AREA	APT STORE	CPARK STORE
APT 3.07 (2B)	88 m ²	11 m ²	6.0 m ³	2.1 m ³
APT 3.08 (3B)	107 m ²	16 m ²	8.0 m ³	2.1 m ³
APT 3.09 (2B)	87 m ²	15 m ²	6.0 m ³	2.1 m ³
APT 3.10 (2B)	77 m ²	11 m ²	6.0 m ³	2.1 m ³
APT 3.11 (2B)	93 m ²	11 m ²	6.0 m ³	2.1 m ³

TOTALS 444 m² 64 m² 32.0 m³ 8.4 m³

* INC CORRIDOR STORAGE

AREAS - L5 - L6

APARTMENT NO	FLOOR AREA	BAL AREA	APT STORE	CPARK STORE
APT 6.12 (2B)	94 m ²	11 m ²	8.9 m ³	2.1 m ³
APT 6.13 (2B)	80 m ²	11 m ²	6.0 m ³	2.1 m ³
APT 6.14 (3B)	99 m ²	15 m ²	8.0 m ³	2.1 m ³
APT 6.15 (2B)	83 m ²	11 m ²	6.0 m ³	2.1 m ³
APT 6.16 (2B)	80 m ²	11 m ²	6.0 m ³	2.1 m ³

TOTALS 437 m² 59 m² 34.9 m³ 8.4 m³

* INC CORRIDOR STORAGE

YIELD (APTS) CAR PARKING

L1	6	BASEMENT	23 CARPARKS
L2	6	GROUND	21 CARPARKS
L3	5	SURPLUS	2 CARPARKS
L4	5	TOTAL	44 CARPARKS
L5	5		
L6	5	32 OFF OVER BONNET KONTOR UNITS	
TOTAL	32	32 FOR APARTMENTS	
		@ 2.1 m ³ EACH INC IN ABOVE	



GROUND FLOOR PLAN
1:100 @ A1 / 1:200 @ A3

AREAS - L1 - L2

APARTMENT NO	FLOOR AREA	BAL AREA	APT STORE	CPARK STORE
APT 1.01 (2B)	99 m ²	11 m ²	6.0 m ³	2.1 m ³
APT 1.02 (2B)	82 m ²	11 m ²	6.0 m ³	2.1 m ³
APT 1.03 (3B)	118 m ²	15 m ²	14.7 m ³	2.1 m ³
APT 1.04 (2B)	78 m ²	11 m ²	7.4 m ³	2.1 m ³
APT 1.05 (2B)	83 m ²	11 m ²	6.2 m ³	2.1 m ³
APT 1.06 (2B)	87 m ²	11 m ²	6.0 m ³	2.1 m ³
TOTALS	547 m²	70 m²	39.1 m³	22.8 m³

* INC CORRIDOR STORAGE

AREAS - L3 - L4

APARTMENT NO	FLOOR AREA	BAL AREA	APT STORE	CPARK STORE
APT 3.07 (2B)	88 m ²	11 m ²	6.0 m ³	2.1 m ³
APT 3.08 (3B)	107 m ²	16 m ²	8.0 m ³	2.1 m ³
APT 3.09 (2B)	87 m ²	15 m ²	6.0 m ³	2.1 m ³
APT 3.10 (2B)	77 m ²	11 m ²	6.0 m ³	2.1 m ³
APT 3.11 (2B)	93 m ²	11 m ²	6.0 m ³	2.1 m ³
TOTALS	444 m²	64 m²	32.0 m³	8.4 m³

* INC CORRIDOR STORAGE

AREAS - L5 - L6

APARTMENT NO	FLOOR AREA	BAL AREA	APT STORE	CPARK STORE
APT 6.12 (2B)	94 m ²	11 m ²	8.9 m ³	2.1 m ³
APT 6.13 (2B)	80 m ²	11 m ²	6.0 m ³	2.1 m ³
APT 6.14 (3B)	99 m ²	15 m ²	8.0 m ³	2.1 m ³
APT 6.15 (2B)	83 m ²	11 m ²	6.0 m ³	2.1 m ³
APT 6.16 (2B)	80 m ²	11 m ²	6.0 m ³	2.1 m ³
TOTALS	437 m²	59 m²	34.9 m³	8.4 m³

* INC CORRIDOR STORAGE

YIELD (APTS)		CAR PARKING	
L1	6	BASEMENT	23 CARPARKS
L2	6	GROUND	21 CARPARKS
L3	5	SURPLUS	2 CARPARKS
L4	5	TOTAL	44 CARPARKS
L5	5		
L6	5	32 OFF OVER BONNET KONTOR UNITS	
TOTAL	32	32 FOR APARTMENTS	
		@ 2.1 m³ EACH INC IN ABOVE	



LEVELS 1-2 FLOOR PLAN
1:100 @ A1 / 1:200 @ A3

AREAS - L1 - L2

APARTMENT NO	FLOOR AREA	BAL AREA	APT STORE	CPARK STORE
APT 1.01 (2B)	99 m ²	11 m ²	6.0 m ³	2.1 m ³
APT 1.02 (2B)	82 m ²	11 m ²	6.0 m ³	2.1 m ³
APT 1.03 (3B)	118 m ²	15 m ²	14.7 m ³	2.1 m ³
APT 1.04 (2B)	78 m ²	11 m ²	7.4 m ³	2.1 m ³
APT 1.05 (2B)	83 m ²	11 m ²	6.2 m ³	2.1 m ³
APT 1.06 (2B)	87 m ²	11 m ²	6.0 m ³	2.1 m ³
TOTALS	547 m²	70 m²	39.1 m³	22.8 m³
* INC CORRIDOR STORAGE				

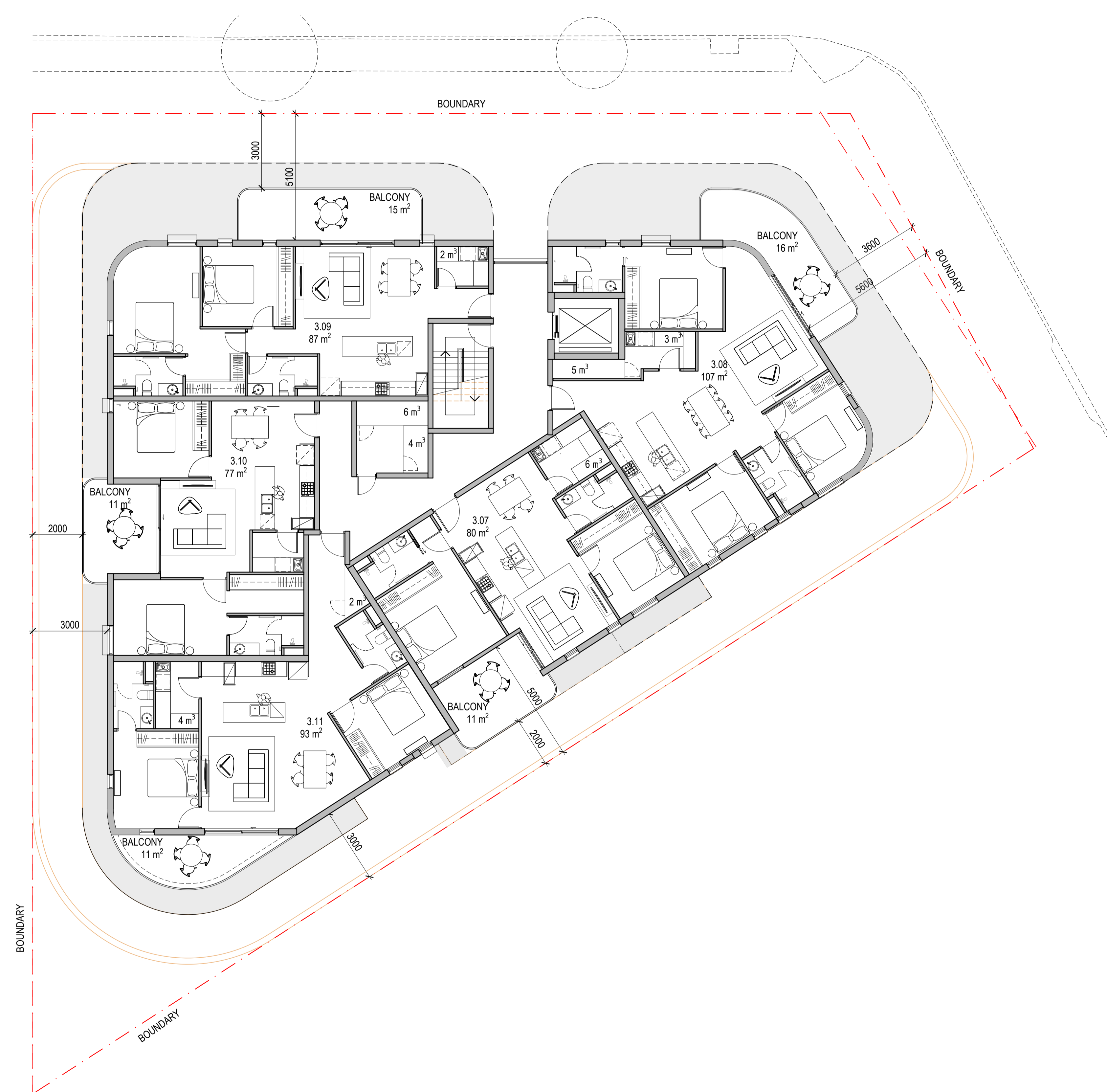
AREAS - L3 - L4

APARTMENT NO	FLOOR AREA	BAL AREA	APT STORE	CPARK STORE
APT 3.07 (2B)	88 m ²	11 m ²	6.0 m ³	2.1 m ³
APT 3.08 (3B)	107 m ²	16 m ²	8.0 m ³	2.1 m ³
APT 3.09 (2B)	87 m ²	15 m ²	6.0 m ³	2.1 m ³
APT 3.10 (2B)	77 m ²	11 m ²	6.0 m ³	2.1 m ³
APT 3.11 (2B)	93 m ²	11 m ²	6.0 m ³	2.1 m ³
TOTALS	444 m²	64 m²	32.0 m³	8.4 m³
* INC CORRIDOR STORAGE				

AREAS - L5 - L6

APARTMENT NO	FLOOR AREA	BAL AREA	APT STORE	CPARK STORE
APT 6.12 (2B)	94 m ²	11 m ²	8.9 m ³	2.1 m ³
APT 6.13 (2B)	80 m ²	11 m ²	6.0 m ³	2.1 m ³
APT 6.14 (3B)	99 m ²	15 m ²	8.0 m ³	2.1 m ³
APT 6.15 (2B)	83 m ²	11 m ²	6.0 m ³	2.1 m ³
APT 6.16 (2B)	80 m ²	11 m ²	6.0 m ³	2.1 m ³
TOTALS	437 m²	59 m²	34.9 m³	8.4 m³
* INC CORRIDOR STORAGE				

YIELD (APTS)		CAR PARKING	
L1	6	BASEMENT	22 CARPARKS
L2	6	GROUND	21 CARPARKS
L3	5		
L4	5	TOTAL	43 CARPARKS
L5	5		
L6	5	38 OFF OVER BONNET KONTOR UNITS	
TOTAL	32	32 FOR APARTMENTS - 5 SURPLUS	@ 2.1 m ³ EACH INC IN ABOVE



LEVELS 3-4 FLOOR PLAN
1:100 @ A1 / 1:200 @ A3

AREAS - L1 - L2

APARTMENT NO	FLOOR AREA	BAL AREA	APT STORE	CPARK STORE
APT 1.01 (2B)	99 m ²	11 m ²	6.0 m ³	2.1 m ³
APT 1.02 (2B)	82 m ²	11 m ²	6.0 m ³	2.1 m ³
APT 1.03 (3B)	118 m ²	15 m ²	14.7 m ³	2.1 m ³
APT 1.04 (2B)	78 m ²	11 m ²	7.4 m ³	2.1 m ³
APT 1.05 (2B)	83 m ²	11 m ²	6.2 m ³	2.1 m ³
APT 1.06 (2B)	87 m ²	11 m ²	6.0 m ³	2.1 m ³

TOTALS	547 m ²	70 m ²	39.1 m ³	22.8 m ³
* INC CORRIDOR STORAGE				

AREAS - L3 - L4

APARTMENT NO	FLOOR AREA	BAL AREA	APT STORE	CPARK STORE
APT 3.07 (2B)	88 m ²	11 m ²	6.0 m ³	2.1 m ³
APT 3.08 (3B)	107 m ²	16 m ²	8.0 m ³	2.1 m ³
APT 3.09 (2B)	87 m ²	15 m ²	6.0 m ³	2.1 m ³
APT 3.10 (2B)	77 m ²	11 m ²	6.0 m ³	2.1 m ³
APT 3.11 (2B)	93 m ²	11 m ²	6.0 m ³	2.1 m ³

TOTALS	444 m ²	64 m ²	32.0 m ³	8.4 m ³
* INC CORRIDOR STORAGE				

AREAS - L5 - L6

APARTMENT NO	FLOOR AREA	BAL AREA	APT STORE	CPARK STORE
APT 6.12 (2B)	94 m ²	11 m ²	8.9 m ³	2.1 m ³
APT 6.13 (2B)	80 m ²	11 m ²	6.0 m ³	2.1 m ³
APT 6.14 (3B)	99 m ²	15 m ²	8.0 m ³	2.1 m ³
APT 6.15 (2B)	83 m ²	11 m ²	6.0 m ³	2.1 m ³
APT 6.16 (2B)	80 m ²	11 m ²	6.0 m ³	2.1 m ³

TOTALS	437 m ²	59 m ²	34.9 m ³	8.4 m ³
* INC CORRIDOR STORAGE				

YIELD (APTS) CAR PARKING

FLOOR	APTS	CAR PARKING
L1	6	BASEMENT 22 CARPARKS
L2	6	GROUND 21 CARPARKS
L3	5	
L4	5	TOTAL 43 CARPARKS
L5	5	
L6	5	38 OFF OVER BONNET KONTOR UNITS
TOTAL	32	32 FOR APARTMENTS - 5 SURPLUS @ 2.1 m² EACH INC IN ABOVE



LEVELS 5-6 FLOOR PLAN
1:100 @ A1 / 1:200 @ A3

AREAS - L1 - L2

APARTMENT NO	FLOOR AREA	BAL AREA	APT STORE	CPARK STORE
APT 1.01 (2B)	99 m ²	11 m ²	6.0 m ³	2.1 m ³
APT 1.02 (2B)	82 m ²	11 m ²	6.0 m ³	2.1 m ³
APT 1.03 (3B)	118 m ²	15 m ²	14.7 m ³	2.1 m ³
APT 1.04 (2B)	78 m ²	11 m ²	*7.4 m ³	2.1 m ³
APT 1.05 (2B)	83 m ²	11 m ²	*6.2 m ³	2.1 m ³
APT 1.06 (2B)	87 m ²	11 m ²	6.0 m ³	2.1 m ³
TOTALS	547 m²	70 m²	39.1 m³	22.8 m³
* INC CORRIDOR STORAGE				

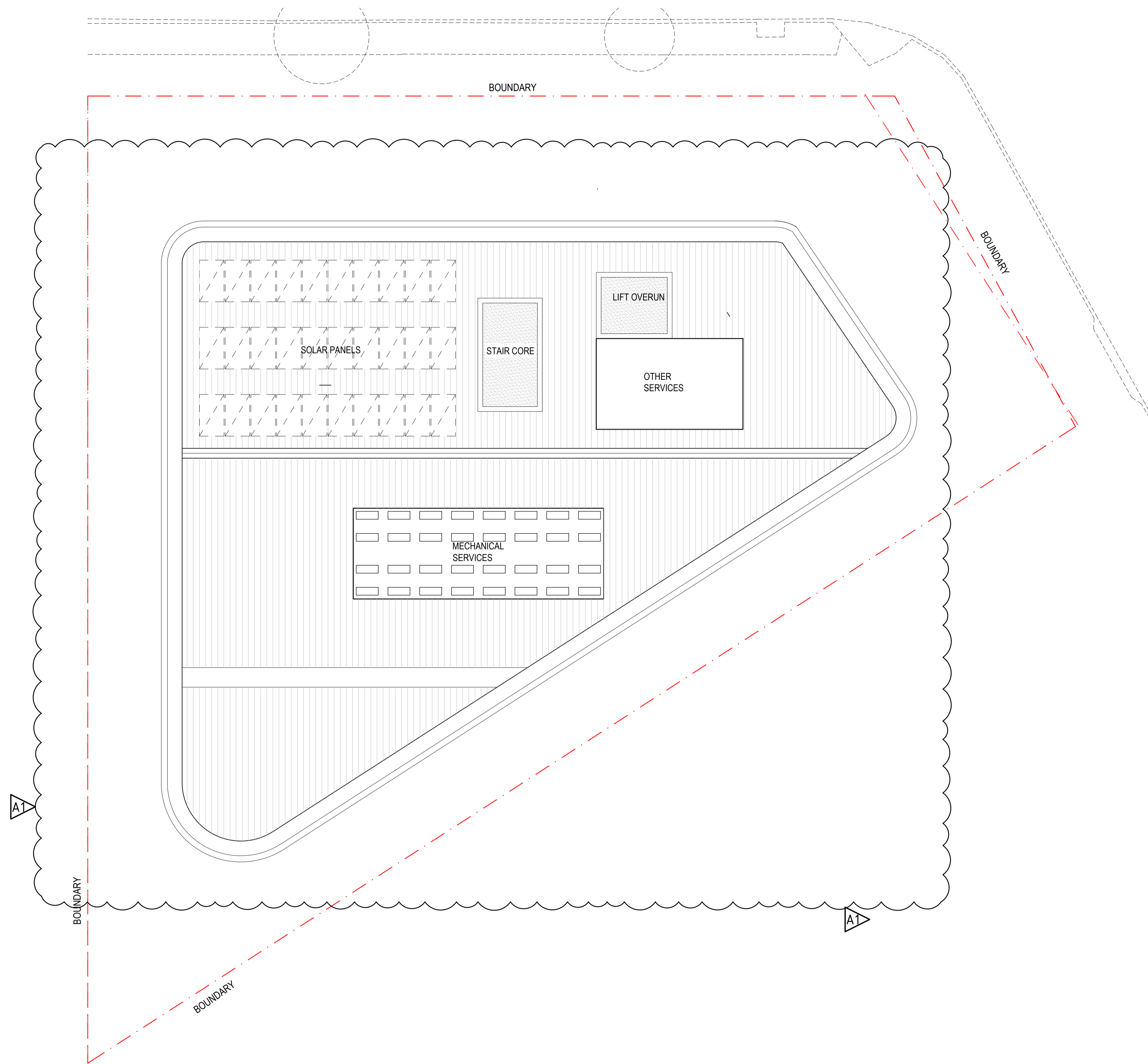
AREAS - L3 - L4

APARTMENT NO	FLOOR AREA	BAL AREA	APT STORE	CPARK STORE
APT 3.07 (2B)	88 m ²	11 m ²	6.0 m ³	2.1 m ³
APT 3.08 (3B)	107 m ²	16 m ²	8.0 m ³	2.1 m ³
APT 3.09 (2B)	87 m ²	15 m ²	*6.0 m ³	2.1 m ³
APT 3.10 (2B)	77 m ²	11 m ²	*6.0 m ³	2.1 m ³
APT 3.11 (2B)	93 m ²	11 m ²	6.0 m ³	2.1 m ³
TOTALS	444 m²	64 m²	32.0 m³	8.4 m³
* INC CORRIDOR STORAGE				

AREAS - L5 - L6

APARTMENT NO	FLOOR AREA	BAL AREA	APT STORE	CPARK STORE
APT 6.12 (2B)	94 m ²	11 m ²	*8.9 m ³	2.1 m ³
APT 6.13 (2B)	80 m ²	11 m ²	6.0 m ³	2.1 m ³
APT 6.14 (3B)	99 m ²	15 m ²	8.0 m ³	2.1 m ³
APT 6.15 (2B)	83 m ²	11 m ²	6.0 m ³	2.1 m ³
APT 6.16 (2B)	80 m ²	11 m ²	6.0 m ³	2.1 m ³
TOTALS	437 m²	59 m²	34.9 m³	8.4 m³
* INC CORRIDOR STORAGE				

YIELD (APTS)		CAR PARKING	
L1	6	BASEMENT	22 CARPARKS
L2	6	GROUND	21 CARPARKS
L3	5		
L4	5	TOTAL	43 CARPARKS
L5	5		
L6	5	38 OFF OVER BONNET KONTOR UNITS	
TOTAL	32	32 FOR APARTMENTS - 5 SURPLUS	@ 2.1 m³ EACH INC IN ABOVE



LEVELS 5-6 FLOOR PLAN
1:100 @ A1 / 1:200 @ A3

AREAS - L1 - L2

APARTMENT NO	FLOOR AREA	BAL AREA	APT STORE	CPARK STORE
APT 1.01 (2B)	99 m ²	11 m ²	6.0 m ³	2.1 m ³
APT 1.02 (2B)	82 m ²	11 m ²	6.0 m ³	2.1 m ³
APT 1.03 (3B)	118 m ²	15 m ²	14.7 m ³	2.1 m ³
APT 1.04 (2B)	78 m ²	11 m ²	*7.4 m ³	2.1 m ³
APT 1.05 (2B)	83 m ²	11 m ²	*6.2 m ³	2.1 m ³
APT 1.06 (2B)	87 m ²	11 m ²	6.0 m ³	2.1 m ³

TOTALS 547 m² 70 m² 39.1 m³ 22.8 m³

* INC CORRIDOR STORAGE

AREAS - L3 - L4

APARTMENT NO	FLOOR AREA	BAL AREA	APT STORE	CPARK STORE
APT 3.07 (2B)	88 m ²	11 m ²	6.0 m ³	2.1 m ³
APT 3.08 (3B)	107 m ²	16 m ²	8.0 m ³	2.1 m ³
APT 3.09 (2B)	87 m ²	15 m ²	*6.0 m ³	2.1 m ³
APT 3.10 (2B)	77 m ²	11 m ²	*6.0 m ³	2.1 m ³
APT 3.11 (2B)	93 m ²	11 m ²	6.0 m ³	2.1 m ³

TOTALS 444 m² 64 m² 32.0 m³ 8.4 m³

* INC CORRIDOR STORAGE

AREAS - L5 - L6

APARTMENT NO	FLOOR AREA	BAL AREA	APT STORE	CPARK STORE
APT 6.12 (2B)	94 m ²	11 m ²	*8.9 m ³	2.1 m ³
APT 6.13 (2B)	80 m ²	11 m ²	6.0 m ³	2.1 m ³
APT 6.14 (3B)	99 m ²	15 m ²	8.0 m ³	2.1 m ³
APT 6.15 (2B)	83 m ²	11 m ²	6.0 m ³	2.1 m ³
APT 6.16 (2B)	80 m ²	11 m ²	6.0 m ³	2.1 m ³

TOTALS 437 m² 59 m² 34.9 m³ 8.4 m³

* INC CORRIDOR STORAGE

YIELD (APTS) CAR PARKING

L1	6	BASEMENT	22 CARPARKS
L2	6	GROUND	21 CARPARKS
L3	5		
L4	5	TOTAL	43 CARPARKS
L5	5		
L6	5	38 OFF OVER BONNET KONTOR UNITS	
TOTAL	32	32 FOR APARTMENTS - 5 SURPLUS	@ 2.1 m ³ EACH INC IN ABOVE

REVISIONS - ISSUE A

ODASA REFERRAL/RFI

A1 - ROOF PLAN PROVIDED + INDICATIVE PLANT AND SERVICES LAYOUTS INC MECHANICAL PLANT

MATERIALS

- M01 BRICKWORK - AUSTRAL LA PALOMA IN CASTELLANA - WHITE
- M02 GLAZING - CLEAR/TINTED PERFORMANCE
- M03 BATTENS - ALUMINIUM SLATS - TIMBER FINISH
- M04 WALL PANELS - REVOLUTION ROOFING EURO PLUS - WHITE
- M05 CFC INFILL - PAINT FINISH - DARK GREY
- M06 SHADE FRAME - ALUMINIUM - DARK GREY POWDERCOAT
- M07 WINDOWS - ALUMINIUM - DARK GREY POWDERCOAT
- M08 PAINTED CFC - 1/3 TONE DARK GREY
- M09 BALUSTRADE - GLASS/STEEL FRAME - CLEAR/GREY
- M10 LOUVRE - ALUMINIUM GRILLE - WHITE



NORTH ELEVATION
1:100 @ A1 / 1:200 @ A3

REVISIONS - ISSUE A

ODASA REFERRAL/RFI
A - MATERIALS AND FINISHES ADDED

MATERIALS

- M01 BRICKWORK - AUSTRAL LA PALOMA IN CASTELLANA - WHITE
- M02 GLAZING - CLEAR/TINTED PERFORMANCE
- M03 BATTENS - ALUMINIUM SLATS - TIMBER FINISH
- M04 WALL PANELS - REVOLUTION ROOFING EURO PLUS - WHITE
- M05 CFC INFILL - PAINT FINISH - DARK GREY
- M06 SHADE FRAME - ALUMINIUM - DARK GREY POWDERCOAT
- M07 WINDOWS - ALUMINIUM - DARK GREY POWDERCOAT
- M08 PAINTED CFC - 1/3 TONE DARK GREY
- M09 BALUSTRADE - GLASS/STEEL FRAME - CLEAR/GREY
- M10 LOUVRE - ALUMINIUM GRILLE - WHITE



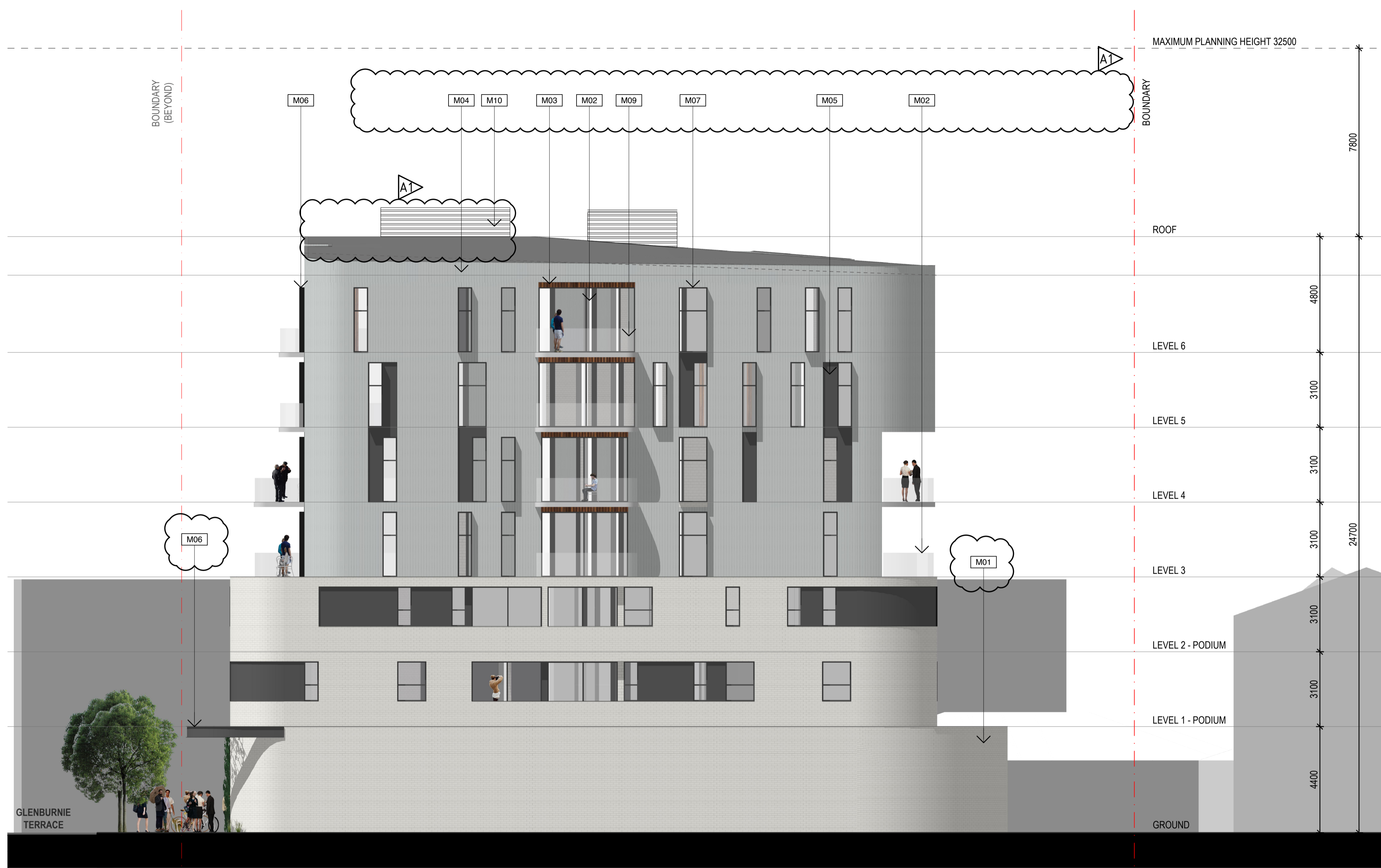
⊖ EAST ELEVATION
1:100 @ A1 / 1:200 @ A3

REVISIONS - ISSUE A

ODASA REFERRAL/RFI
A - MATERIALS AND FINISHES ADDED

MATERIALS

- M01 BRICKWORK - AUSTRAL LA PALOMA IN CASTELLANA - WHITE
- M02 GLAZING - CLEAR/TINTED PERFORMANCE
- M03 BATTENS - ALUMINIUM SLATS - TIMBER FINISH
- M04 WALL PANELS - REVOLUTION ROOFING EURO PLUS - WHITE
- M05 CFC INFILL - PAINT FINISH - DARK GREY
- M06 SHADE FRAME - ALUMINIUM - DARK GREY POWDERCOAT
- M07 WINDOWS - ALUMINIUM - DARK GREY POWDERCOAT
- M08 PAINTED CFC - 1/3 TONE DARK GREY
- M09 BALUSTRADE - GLASS/STEEL FRAME - CLEAR/GREY
- M10 LOUVRE - ALUMINIUM GRILLE - WHITE



WEST ELEVATION
1:100 @ A1 / 1:200 @ A3

REVISIONS - ISSUE A

ODASA REFERRAL/RFI
A - MATERIALS AND FINISHES ADDED

MATERIALS

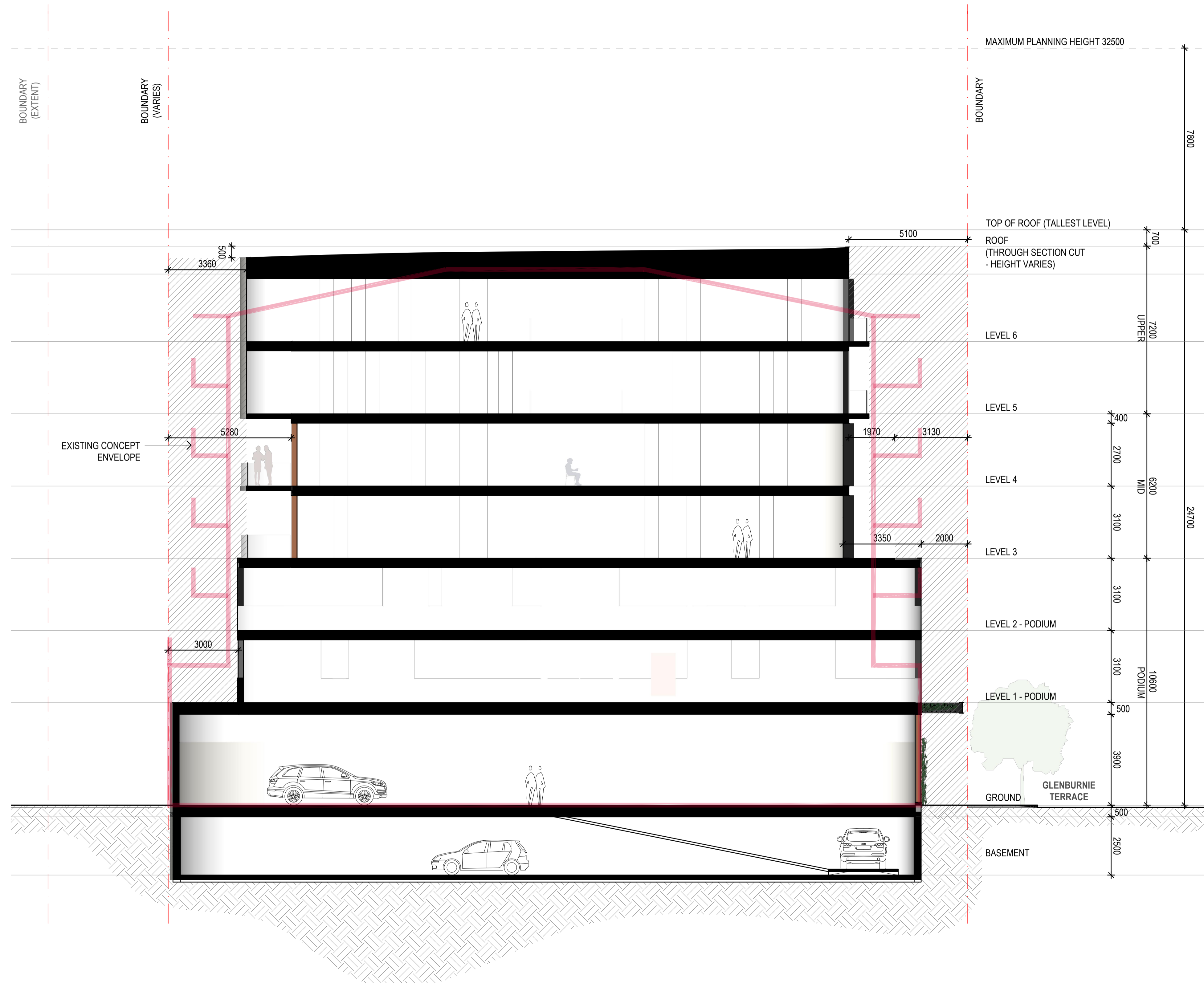
- M01 BRICKWORK - AUSTRAL LA PALOMA IN CASTELLANA - WHITE
- M02 GLAZING - CLEAR/TINTED PERFORMANCE
- M03 BATTENS - ALUMINIUM SLATS - TIMBER FINISH
- M04 WALL PANELS - REVOLUTION ROOFING EURO PLUS - WHITE
- M05 CFC INFILL - PAINT FINISH - DARK GREY
- M06 SHADE FRAME - ALUMINIUM - DARK GREY POWDERCOAT
- M07 WINDOWS - ALUMINIUM - DARK GREY POWDERCOAT
- M08 PAINTED CFC - 1/3 TONE DARK GREY
- M09 BALUSTRADE - GLASS/STEEL FRAME - CLEAR/GREY
- M10 LOUVRE - ALUMINIUM GRILLE - WHITE



⊖ SOUTH ELEVATION
1:100 @ A1 / 1:200 @ A3

REVISIONS - ISSUE A

ODASA REFERRAL/RFI
A - MATERIALS AND FINISHES ADDED




TYPICAL SECTION
 1:100 @ A1 / 1:200 @ A3