

PRINCIPLE 7: LEGIBILITY

PUBLIC DOMAIN INTERFACE



Townhouses

The townhouses are imagined as integrated dwellings to the apartments with architectural expression via material consistency to tie the developments together in a complimentary ensemble.

Each townhouse will have its own entry and street address with direct access to the street. Layering of materiality with facebrick fencing will provide a human scale and articulation to the street. Strong vertical reading of the graffiato render wall and openings will further break-up the scale of the townhouses. Good landscaping provisions to Lockhart Street will also provide a privacy buffer to the townhouse development.

Apartment & Entry

The apartment entry is setback from Lockhart street and incorporates a tree avenue leading occupants in from street to the main lobby space. An intergrated entry canopy and gateway further provides a welcoming street address.

The enclosed lobby is secured which circulates occupants to the main lift / stairwell. Indoor planting is incorporated to continue the landscape path into this arriving space.

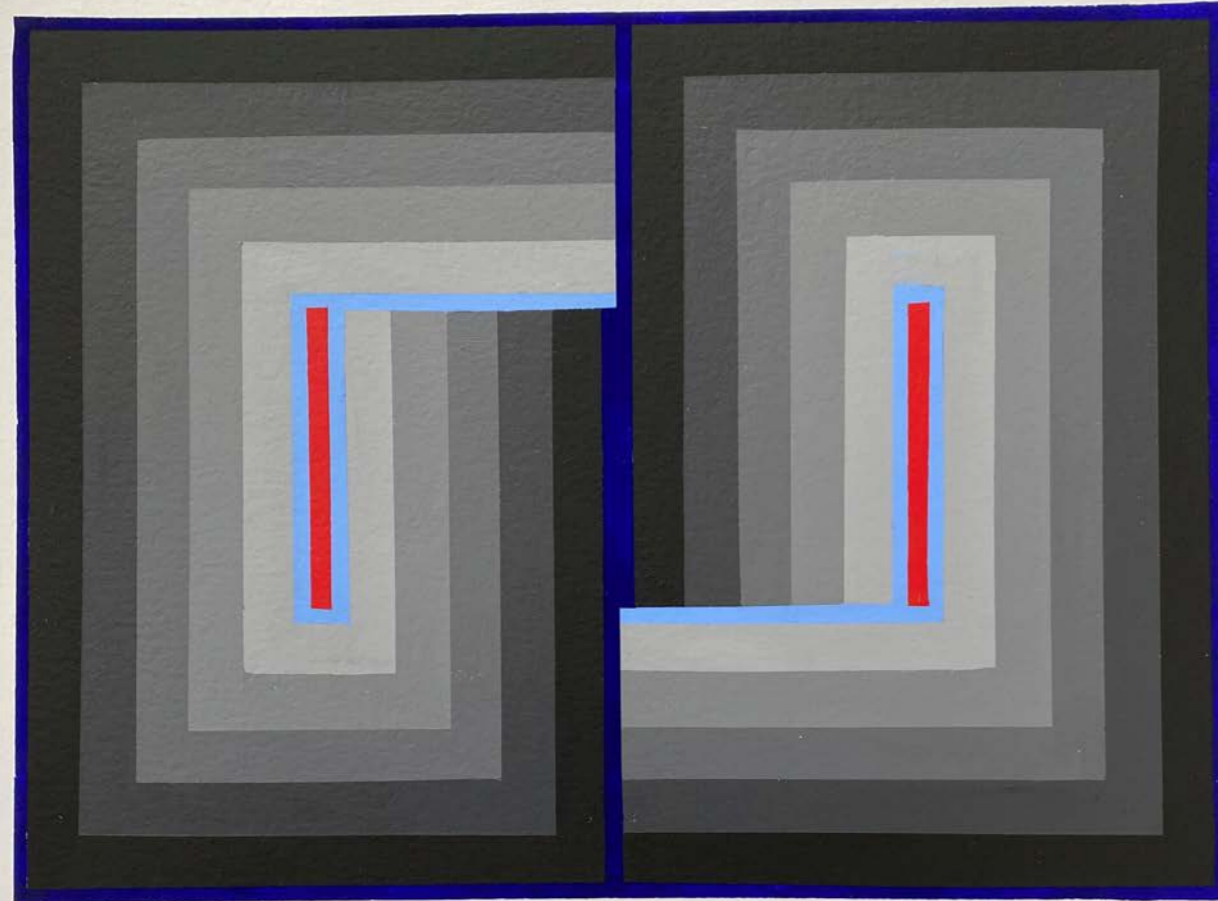
The vehicle entry is access via the R.O.W. and is clearly defined via a motorised gate.



PRINCIPLE 10: AESTHETICS

'GREY LIGHTS'_Artist Sketch + Statement

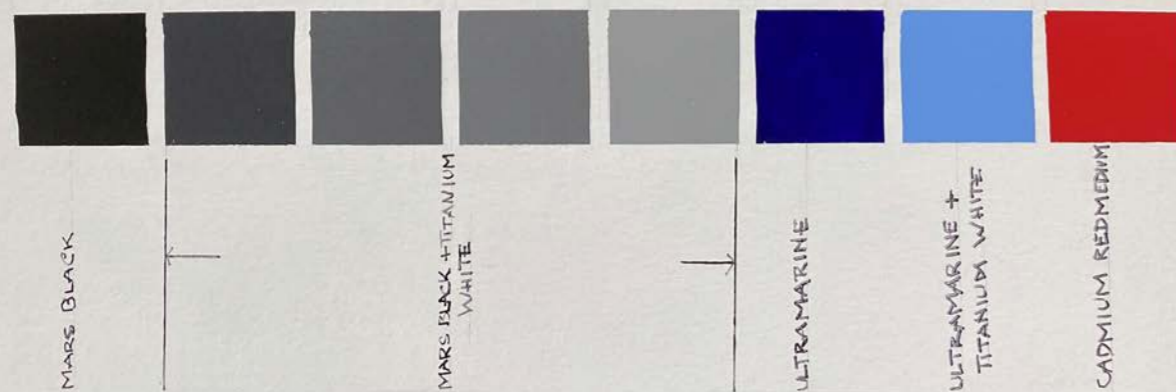
PROPOSED GATEHOUSE MURAL
73 LOCKHART STREET COMO.



OUTSIDE WALL

Jordan
2020

COLOUR CODE DERIVAN MATISSE - PROFESSIONAL ARTIST ACRYLIC.



My design for this project is determined by two factors:

1. The rectilinear design of the building
2. The colour of the façade

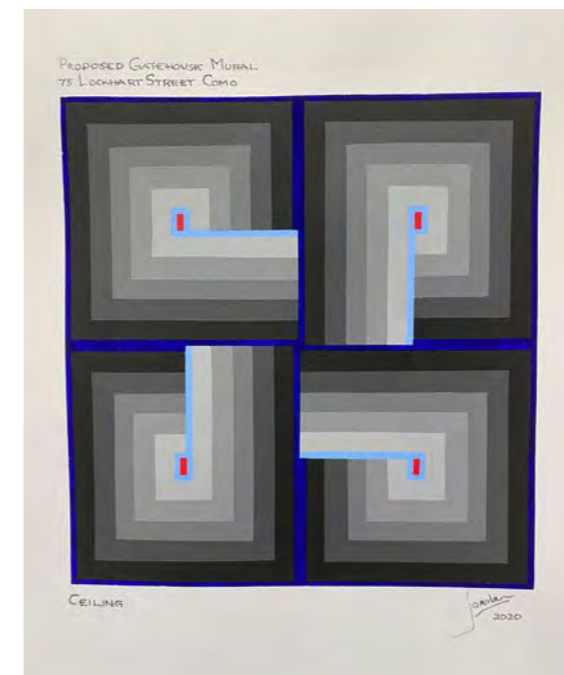
1. The rectilinear design of the building:

Grey Lights explores and reinforces the pattern of interlocking vertical and horizontal forms which characterise the building. The mural echoes this pattern but in optically ambiguous striped rectangles. It is a device I have used repeatedly in my work since my first solo exhibition in 1966. I believe that members of the community who encounter the mural will be intrigued, perplexed and ultimately delighted by the visual irony of the design and find that it enhances the presence of the building.

2. The colour of the facade

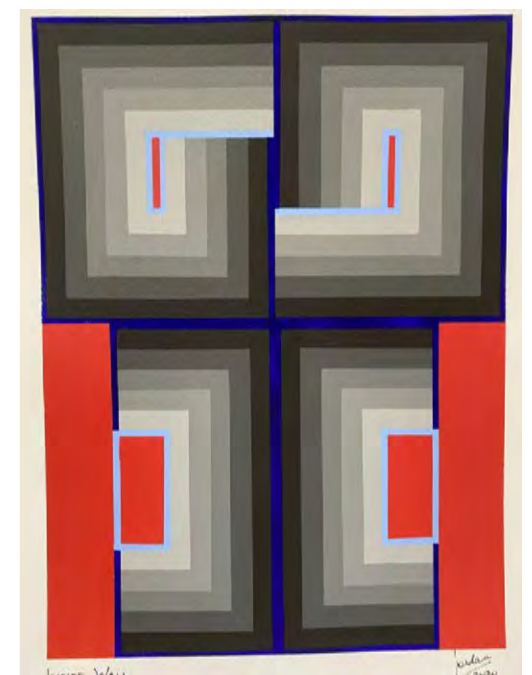
The building's facade is a pattern of white, black and grey, so I have chosen to make the mural predominantly monochromatic, lifted by flashes of cadmium red and ultramarine. Grey Lights, the title of the mural is therefore apt, but it also suggests the work is a paradox. How is "grey light" possible? The answer is the optical illusion of a "back light" created by juxtaposing stripes of the same colour but of graduated ascending or descending tone. What should be dull and flat becomes mysteriously infused with light and spatial ambiguity. It is another means by which I seek to engage those who encounter the mural in a satisfying and intellectually challenging aesthetic experience.

I invite those who are interested in discovering how the devices I have described are characteristic of my work in other contexts, to visit my website: www.artofcoljordan.com.au



CEILING

Jordan
2020

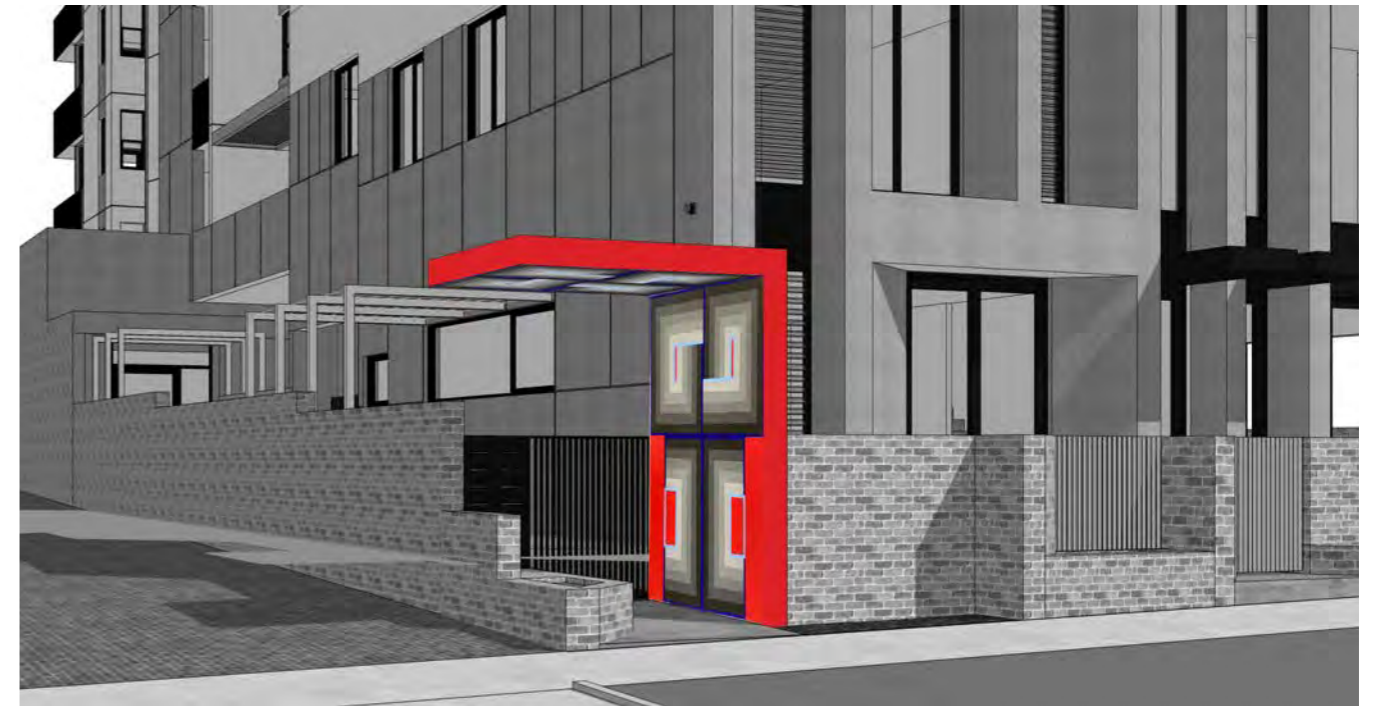


INSIDE WALL

Jordan
2020



APPROACH TO GATEHOUSE_northern approach



APPROACH TO GATEHOUSE_south eastern approach



APPROACH TO GATEHOUSE_eastern approach



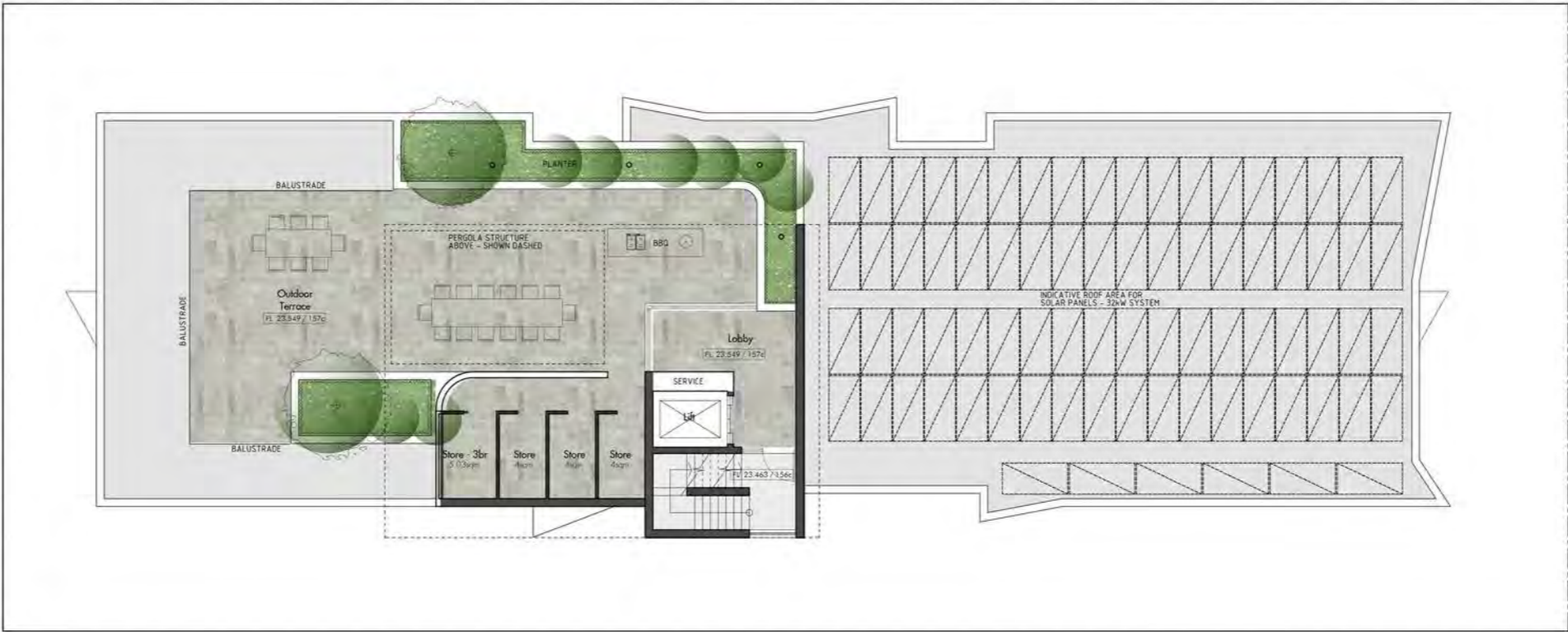
APPROACH TO GATEHOUSE_southern approach











FINISHES SCHEDULE

- STOLIT K #37106 GRAFFIATO FINISH
- STOLIT K #9433 'STO WHITE' 1mm TEXTURE FINISH
- STOLIT K #37106 1mm TEXTURE FINISH
- STOLIT K #9433 'STO WHITE' MILANO FINISH
- STOLIT K #37100 1mm TEXTURE FINISH

STO MILANO BLACK FINISH #37100 (IMAGE IN FOLDER)

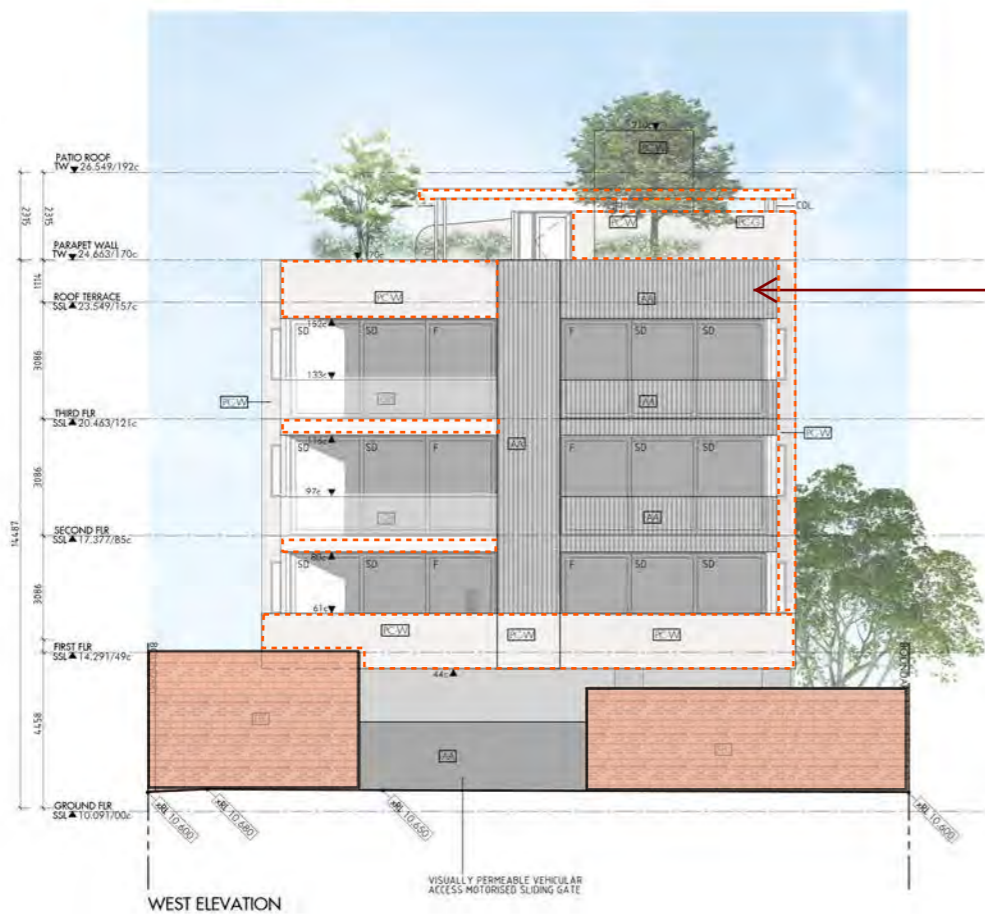
WINDOW FRAMES TO BE COLORBOND MONUMENT COLOUR



EAST ELEVATION (WITH FENCE)



EAST ELEVATION (WITHOUT FENCE)



WEST ELEVATION

ALUMINIUM PRIVACY/FOLDING BATTEN SCREENS WHITE FINISH - HIT MISS 25x50 'ULLRICH'

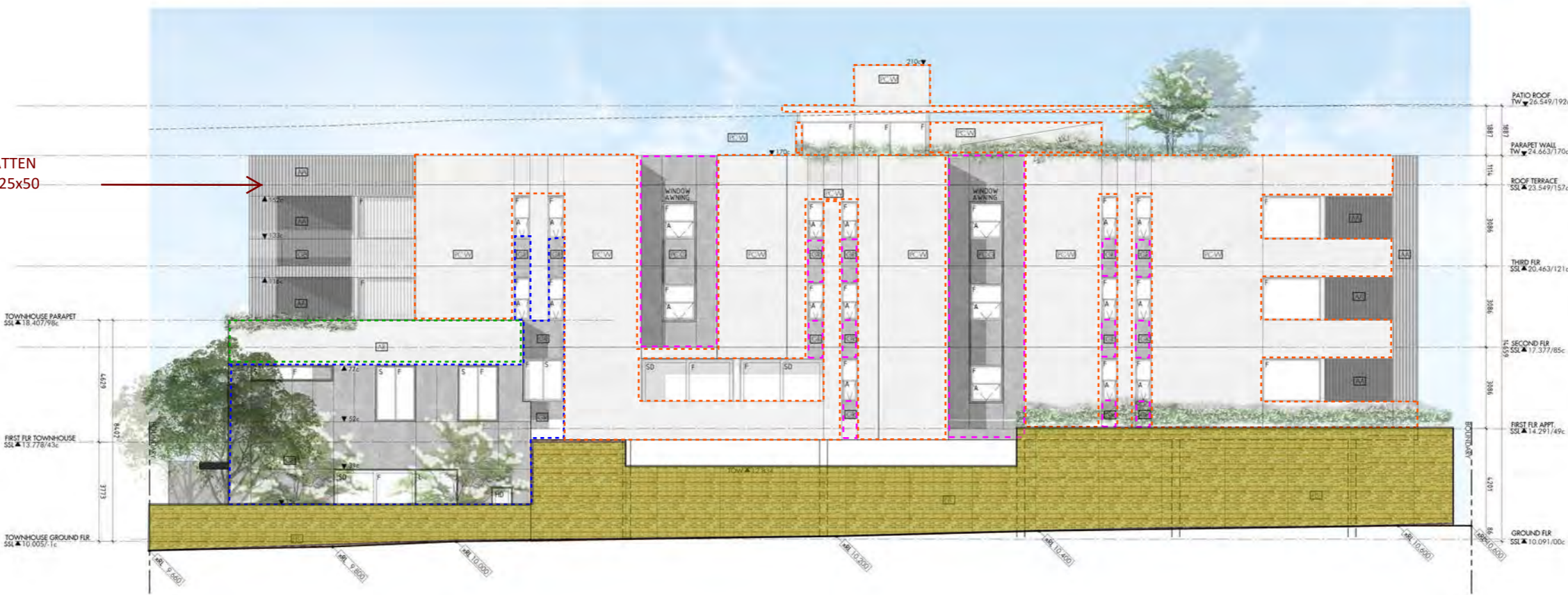
ALUMINIUM PRIVACY/FOLDING BATTEN
SCREENS WHITE FINISH - HIT MISS 25x50
'ULLRICH'



SOUTH ELEVATION

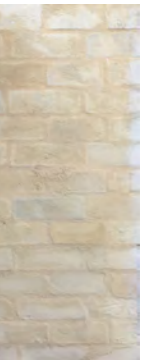
- FINISHES SCHEDULE**
- STOLIT K #37106 GRAFFIATO FINISH
 - STOLIT K #9433 'STO WHITE' 1mm TEXTURE FINISH
 - STOLIT K #37106 1mm TEXTURE FINISH
 - STOLIT K #9433 'STO WHITE' MILANO FINISH

ALUMINIUM PRIVACY/FOLDING BATTEN
SCREENS WHITE FINISH - HIT MISS 25x50
'ULLRICH'



NORTH ELEVATION

- STO MILANO BLACK FINISH #37100 (IMAGE IN FOLDER)
- AFS CONCRETE WALL WITH SCRAPED LOOK RENDER FINISH - COLOUR TONE FROM IMAGE BELOW



WINDOW FRAMES TO BE COLORBOND MONUMENT COLOUR





