



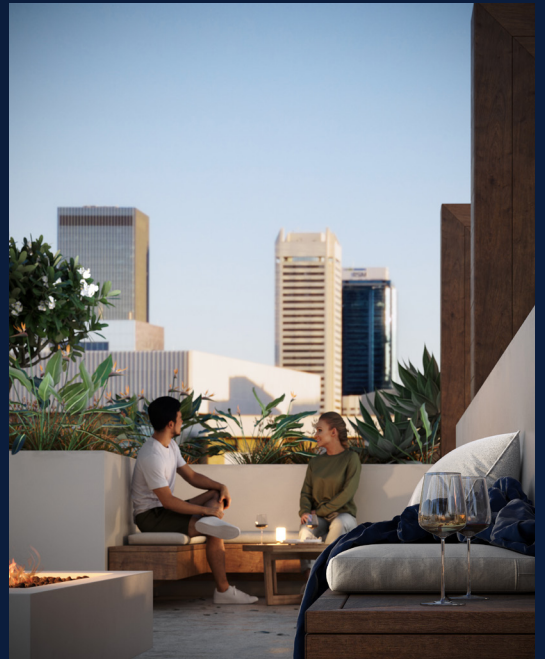
9/15 Money St, Northbridge WA 6000

Live in the heart of Perth's cultural and entertainment hub

Reside on Money is a boutique development of 22 apartments, architecturally designed to complement the character of the streetscape. Choose from a range of one or two bedroom floor plans designed to capitalise on cross ventilation of air flow and the north-facing aspect to maximise the natural dappled light.

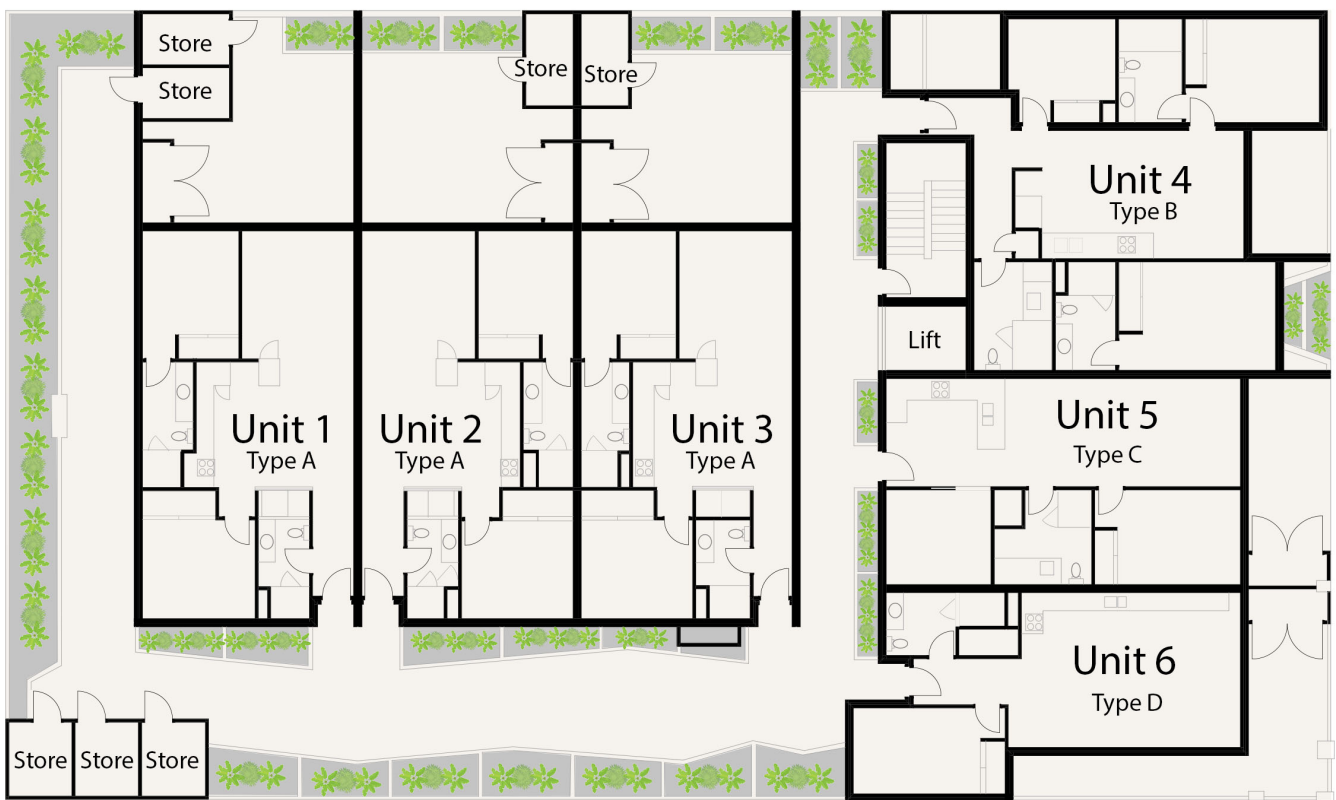
Each reside on money apartment boasts a sleek, stylish interior with a choice of two pre-allocated contrasting colour schemes, French Navy and Black Onyx, which include subtle details to complement your personal taste.

Interiors are finished to the highest living standard; no upgrades necessary. Enjoy 2.7m high ceilings, engineered stone benchtops, lavish joinery, top quality appliances, inbuilt dishwasher, air-conditioning in the living area and bedrooms, full height bathroom tiling, engineered wood flooring and spacious outdoor living spaces.



Floor

FIRST



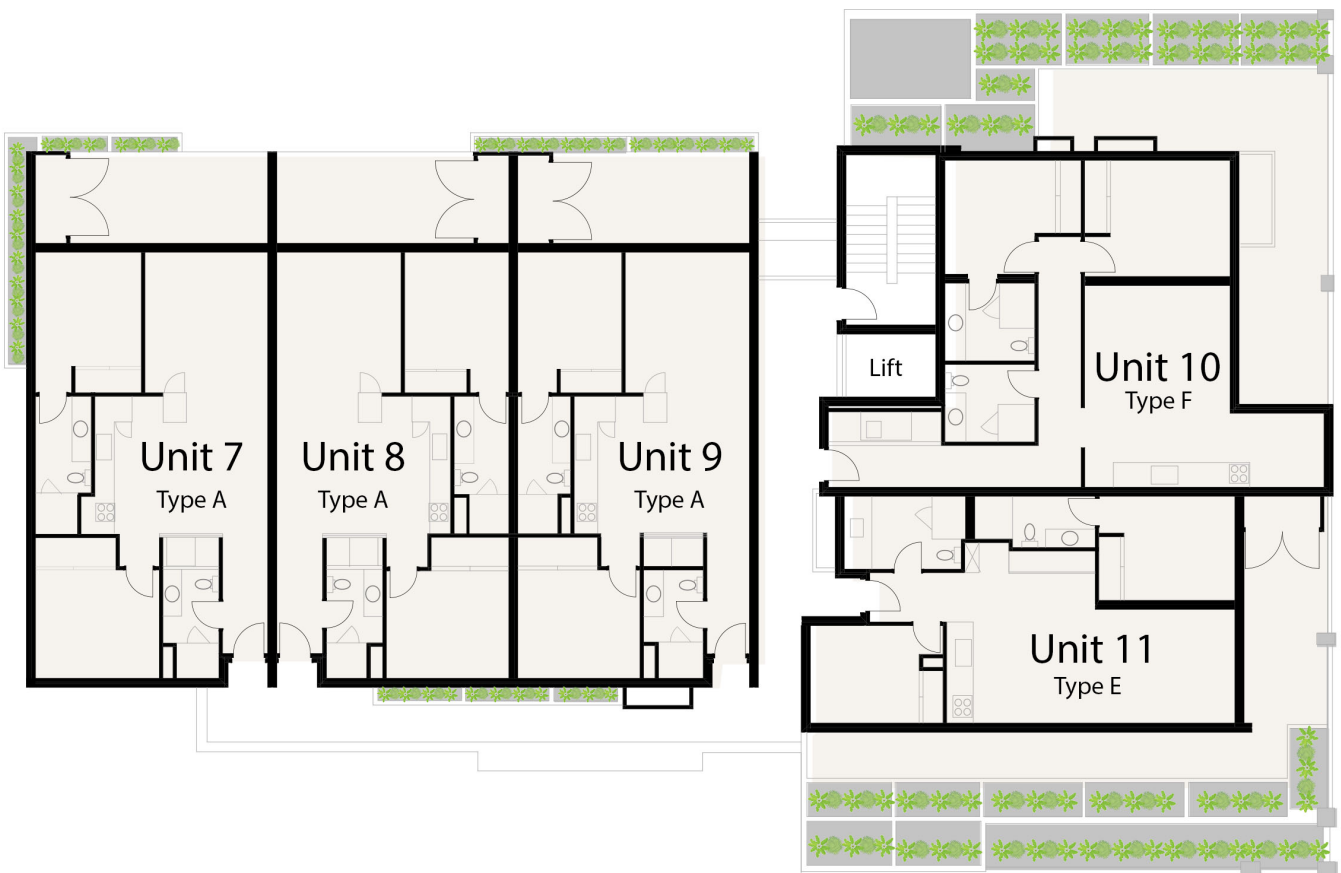
Not to scale • All measurements are approximate • Drawn for presentation purposes only



DISCLAIMER :Variations from strata plans may apply. Furniture is indicative. Shape and configuration of living areas balconies, wall structure, doors, windows, aircon condensers and ducts may differ from those illustrated. Areas of apartment given are based on architectural measurements which varies from strata areas as different methods of measurement is applied.

Floor

SECOND



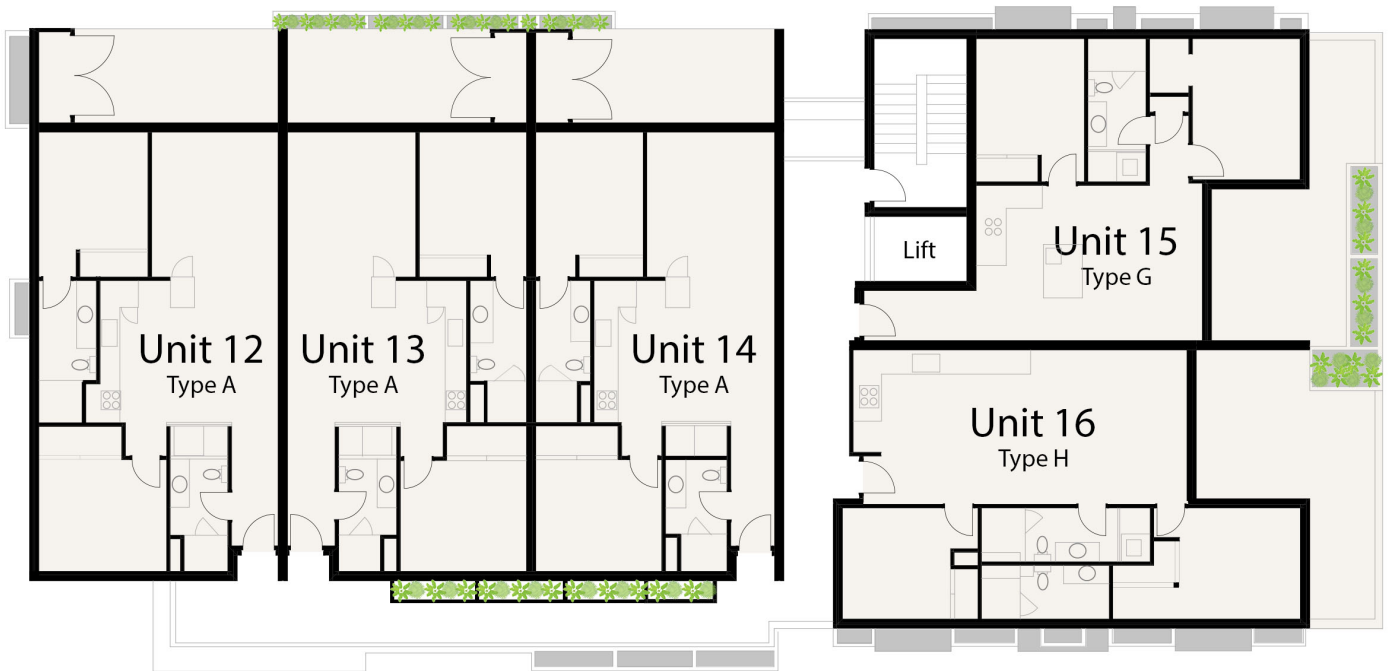
Not to scale • All measurements are approximate • Drawn for presentation purposes only



DISCLAIMER :Variations from strata plans may apply. Furniture is indicative. Shape and configuration of living areas balconies, wall structure, doors, windows, aircon condensers and ducts may differ from those illustrated. Areas of apartment given are based on architectural measurements which varies from strata areas as different methods of measurement is applied.

Floor

THIRD



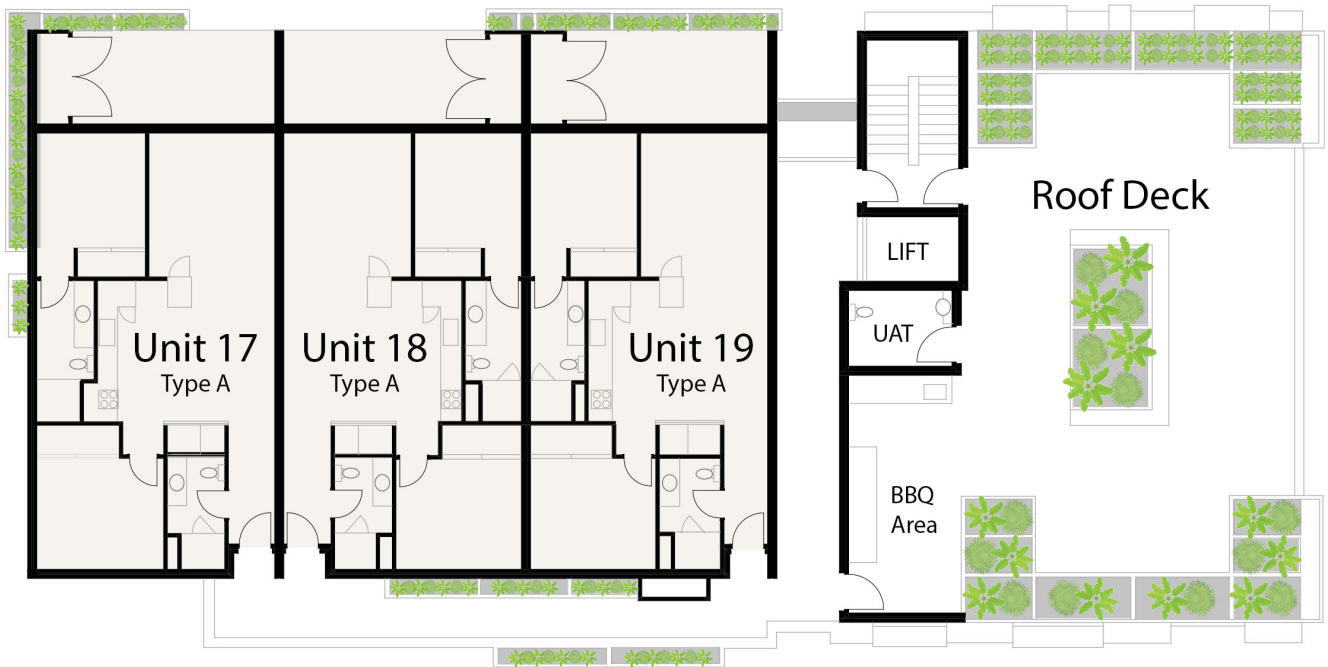
Not to scale · All measurements are approximate · Drawn for presentation purposes only



DISCLAIMER :Variations from strata plans may apply. Furniture is indicative. Shape and configuration of living areas balconies, wall structure, doors, windows, aircon condensers and ducts may differ from those illustrated. Areas of apartment given are based on architectural measurements which varies from strata areas as different methods of measurement is applied.

Floor

FOURTH



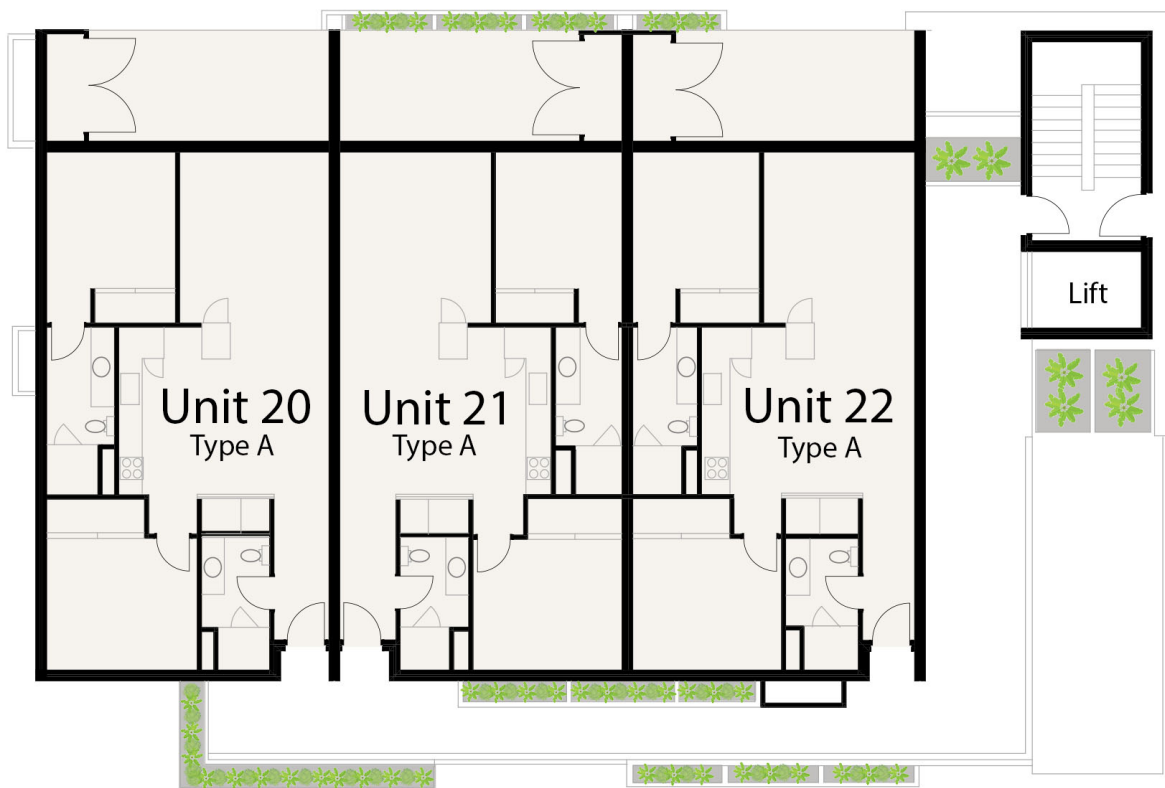
Not to scale • All measurements are approximate • Drawn for presentation purposes only



DISCLAIMER :Variations from strata plans may apply. Furniture is indicative. Shape and configuration of living areas balconies, wall structure, doors, windows, aircon condensers and ducts may differ from those illustrated. Areas of apartment given are based on architectural measurements which varies from strata areas as different methods of measurement is applied.

Floor

FIFTH



Not to scale • All measurements are approximate • Drawn for presentation purposes only



DISCLAIMER :Variations from strata plans may apply. Furniture is indicative. Shape and configuration of living areas balconies, wall structure, doors, windows, aircon condensers and ducts may differ from those illustrated. Areas of apartment given are based on architectural measurements which varies from strata areas as different methods of measurement is applied.

UNIT 2

2 BED X 2 BATH



APARTMENT NUMBER

Unit 2

APARTMENT DETAILS

Bedroom	2
Bathroom	2
Courtyard	1
Car Bay	1
Store	1

APARTMENT AREA

Internal Living Area	74m ²
Courtyard and Planter	34m ²
Store	4m ²
Total Area	112m ²

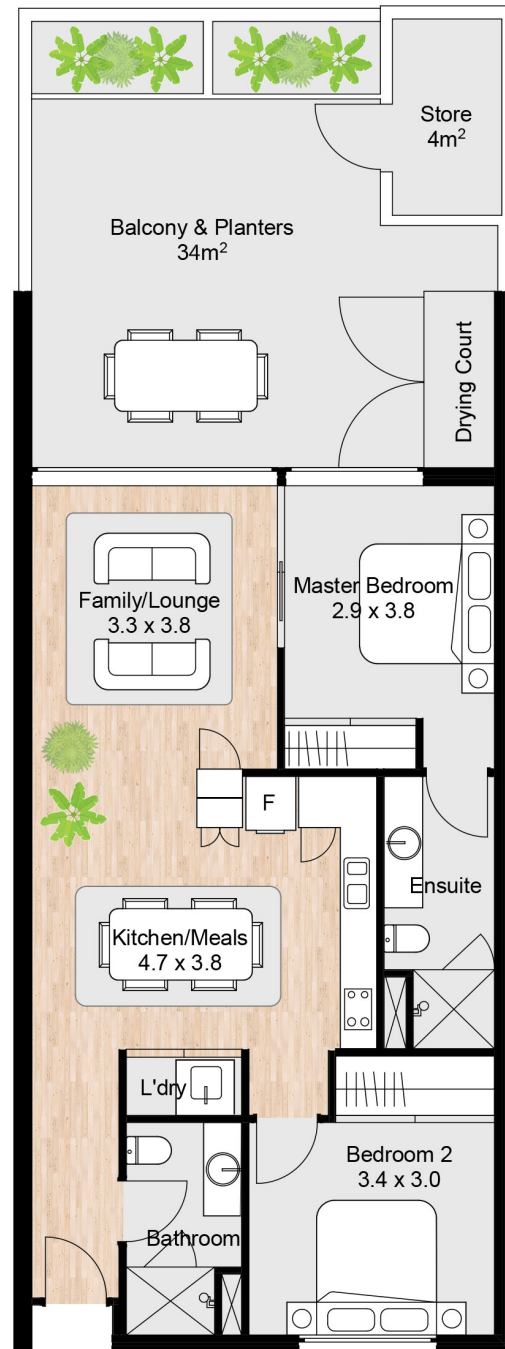
*Allocated Car Stacker Bay

FLOOR

1

COLOUR SCHEME

Black Onyx



DISCLAIMER :Variations from strata plans may apply. Furniture is indicative. Shape and configuration of living areas balconies, wall structure, doors, windows, aircon condensers and ducts may differ from those illustrated. Areas of apartment given are based on architectural measurements which varies from strata areas as different methods of measurement is applied.

UNIT 3

2 BED X 2 BATH



APARTMENT NUMBER

Unit 3

APARTMENT DETAILS

Bedroom	2
Bathroom	2
Courtyard	1
Car Bay	1
Store	1

APARTMENT AREA

Internal Living Area	74m ²
Courtyard and Planter	34m ²
Store	4m ²
Total Area	112m ²

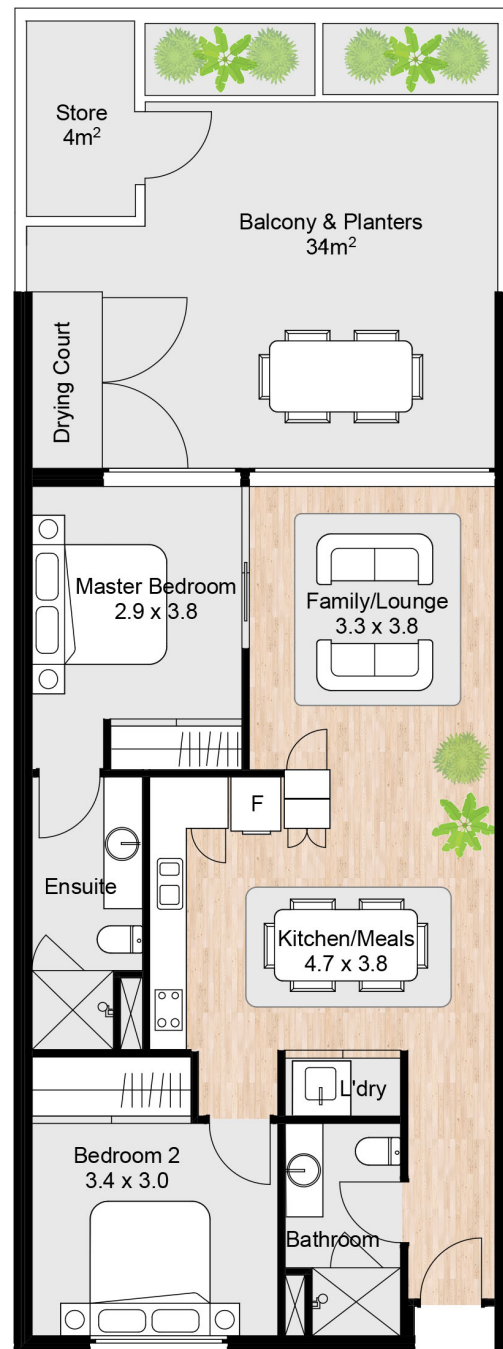
*Allocated Car Stacker Bay

FLOOR

1

COLOUR SCHEME

French Navy



DISCLAIMER :Variations from strata plans may apply. Furniture is indicative. Shape and configuration of living areas balconies, wall structure, doors, windows, aircon condensers and ducts may differ from those illustrated. Areas of apartment given are based on architectural measurements which varies from strata areas as different methods of measurement is applied.

UNIT 4

2 BED X 2 BATH



APARTMENT NUMBER

Unit 4

APARTMENT DETAILS

Bedroom	2
Bathroom	2
Balcony and Courtyards	2
Car Bay	1
Store	1

APARTMENT AREA

Internal Living Area	71m ²
Balcony Courtyard and Planter	16m ²
Store	4m ²
Total Area	91m ²

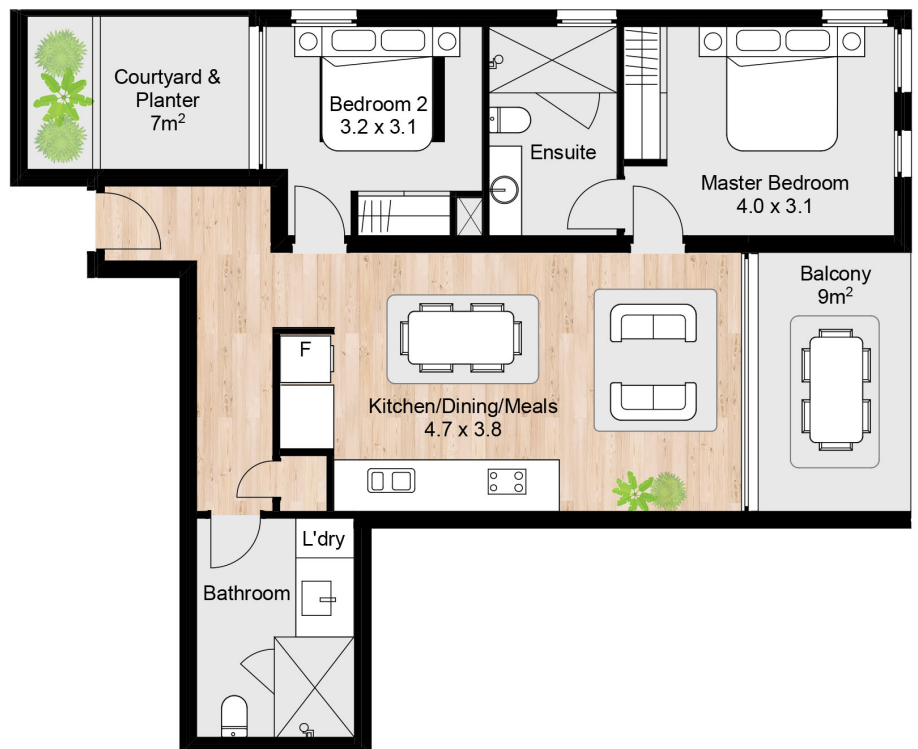
*Allocated Car Stacker Bay

FLOOR

1

COLOUR SCHEME

Black Onyx



DISCLAIMER :Variations from strata plans may apply. Furniture is indicative. Shape and configuration of living areas balconies, wall structure, doors, windows, aircon condensers and ducts may differ from those illustrated. Areas of apartment given are based on architectural measurements which varies from strata areas as different methods of measurement is applied.

UNIT 5

2 BED X 2 BATH + Study



APARTMENT NUMBER

Unit 5

APARTMENT DETAILS

Bedroom	2
Bathroom	2
Balcony	1
Car Bay	1
Store	1

APARTMENT AREA

Internal Living Area	89m ²
Balcony and Planter	16m ²
Store	4m ²
Total Area	109m ²

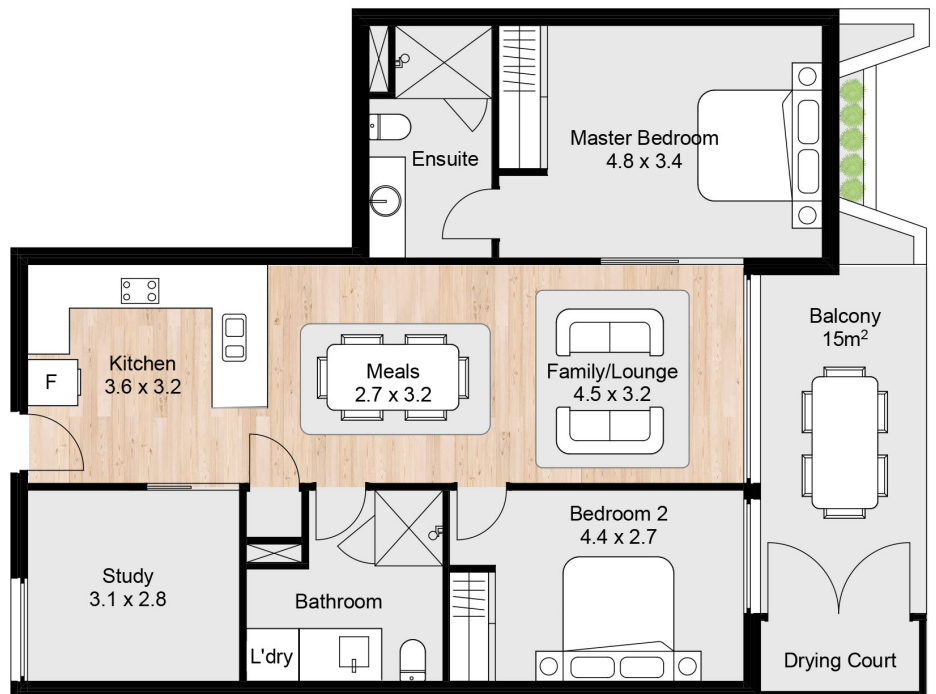
*Allocated Car Stacker Bay

FLOOR

1

COLOUR SCHEME

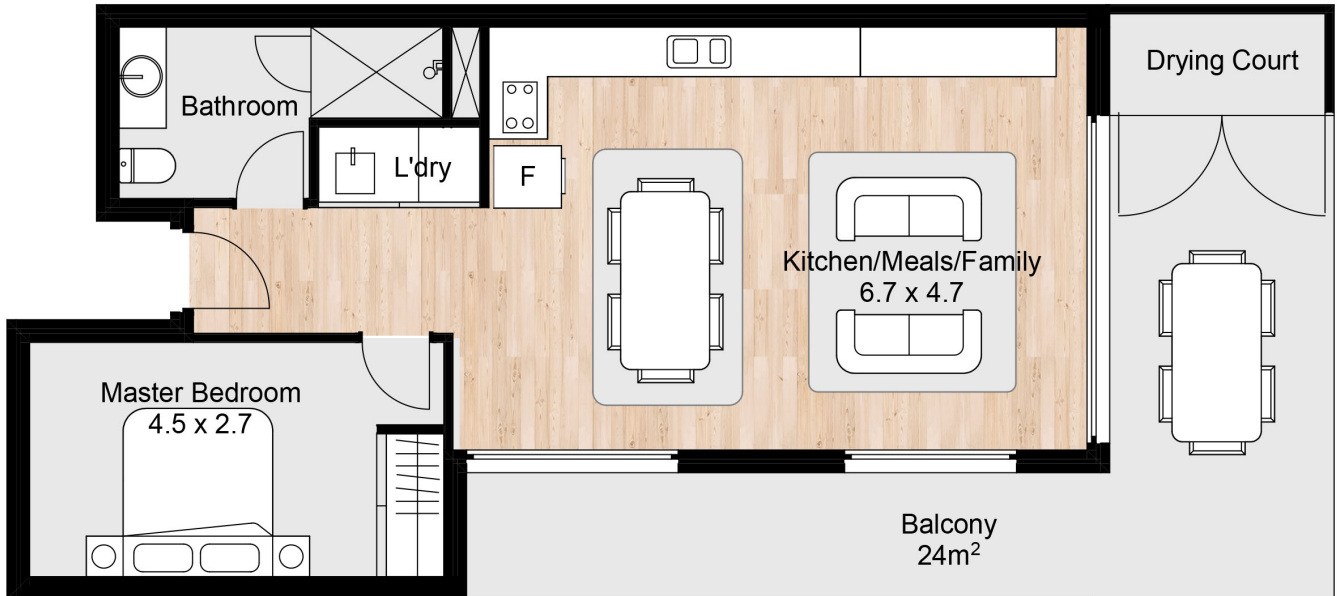
French Navy



DISCLAIMER :Variations from strata plans may apply. Furniture is indicative. Shape and configuration of living areas balconies, wall structure, doors, windows, aircon condensers and ducts may differ from those illustrated. Areas of apartment given are based on architectural measurements which varies from strata areas as different methods of measurement is applied.

UNIT 6

1 BED X 1 BATH



APARTMENT NUMBER

Unit 6

APARTMENT DETAILS

Bedroom	1
Bathroom	2
Balcony	1
Store	1

APARTMENT AREA

Internal Living Area	57m ²
Balcony	24m ²
Store	4m ²
Total Area	85m ²

*Allocated Car Stacker Bay

FLOOR

1

COLOUR SCHEME

Black Onyx



DISCLAIMER :Variations from strata plans may apply. Furniture is indicative. Shape and configuration of living areas balconies, wall structure, doors, windows, aircon condensers and ducts may differ from those illustrated. Areas of apartment given are based on architectural measurements which varies from strata areas as different methods of measurement is applied.

UNIT 7

2 BED X 2 BATH



APARTMENT NUMBER

Unit 7

APARTMENT DETAILS

Bedroom	2
Bathroom	2
Balcony	1
Car Bay	1
Store	1

APARTMENT AREA

Internal Living Area	74m ²
Balcony and Planters	17m ²
Store	4m ²
Total Area	95m ²

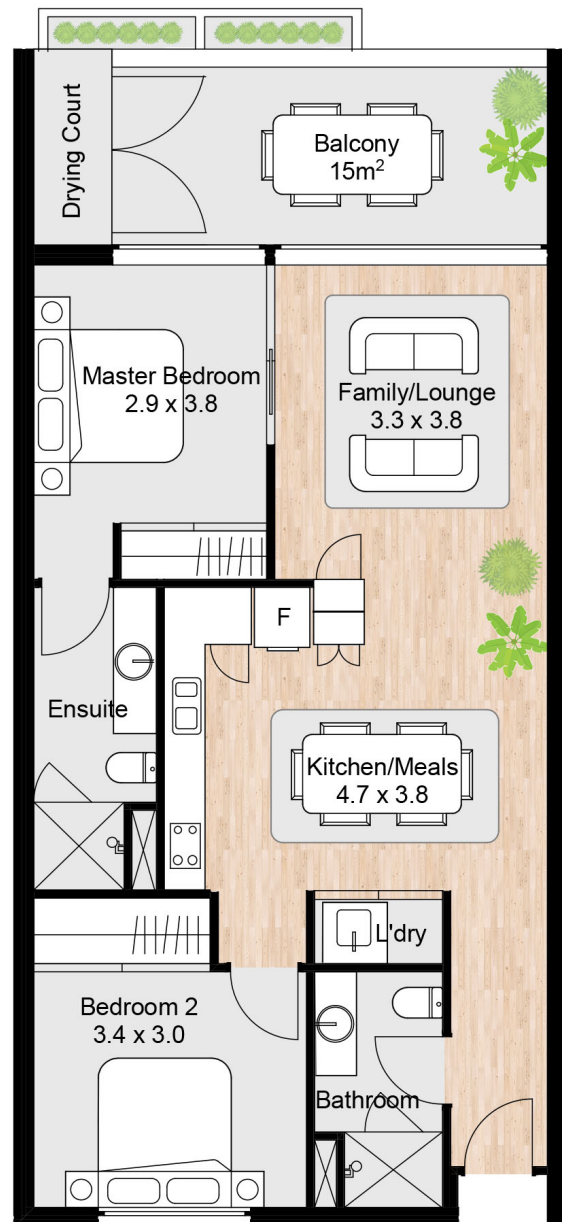
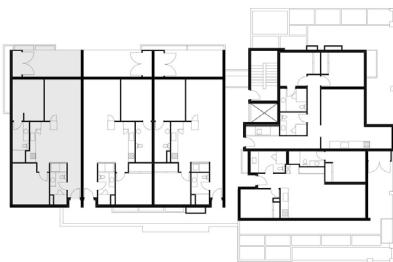
*Allocated Car Stacker Bay

FLOOR

2

COLOUR SCHEME

Black Onyx



DISCLAIMER :Variations from strata plans may apply. Furniture is indicative. Shape and configuration of living areas balconies, wall structure, doors, windows, aircon condensers and ducts may differ from those illustrated. Areas of apartment given are based on architectural measurements which varies from strata areas as different methods of measurement is applied.

UNIT 8

2 BED X 2 BATH



APARTMENT NUMBER

Unit 8

APARTMENT DETAILS

Bedroom	2
Bathroom	2
Balcony	1
Car Bay	1
Store	1

APARTMENT AREA

Internal Living Area	74m ²
Balcony and Planters	17m ²
Store	4m ²
Total Area	95m ²

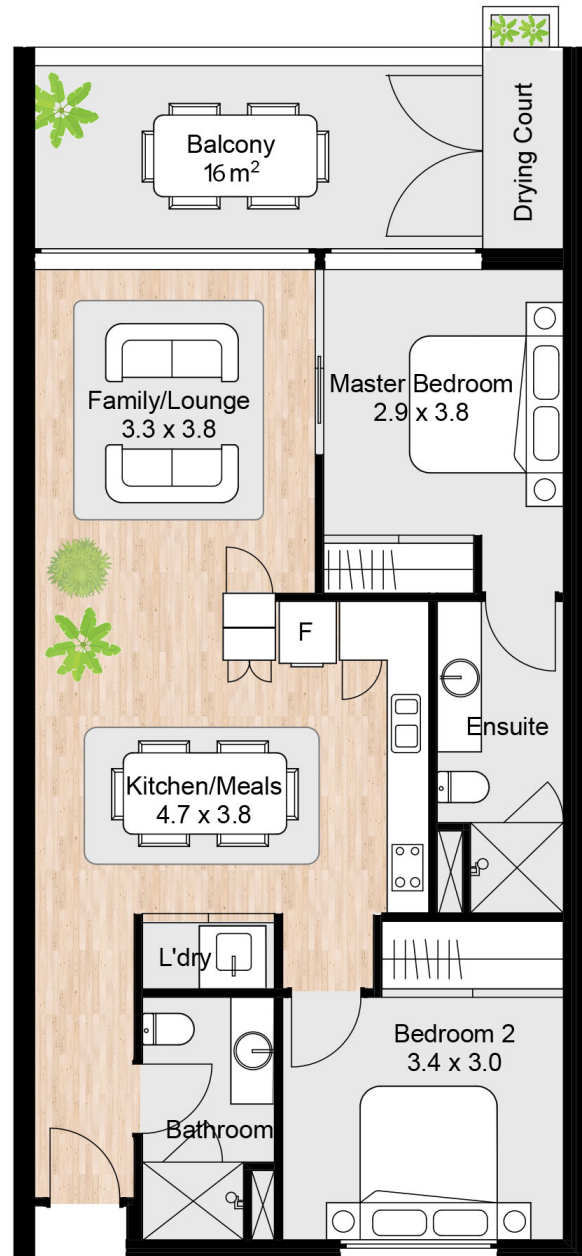
*Allocated Car Stacker Bay

FLOOR

2

COLOUR SCHEME

French Navy



DISCLAIMER :Variations from strata plans may apply. Furniture is indicative. Shape and configuration of living areas balconies, wall structure, doors, windows, aircon condensers and ducts may differ from those illustrated. Areas of apartment given are based on architectural measurements which varies from strata areas as different methods of measurement is applied.

UNIT 9

2 BED X 2 BATH



APARTMENT NUMBER

Unit 9

APARTMENT DETAILS

Bedroom	2
Bathroom	2
Balcony	1
Car Bay	1
Store	1

APARTMENT AREA

Internal Living Area	74m ²
Balcony and Planters	17m ²
Store	4m ²
Total Area	95m ²

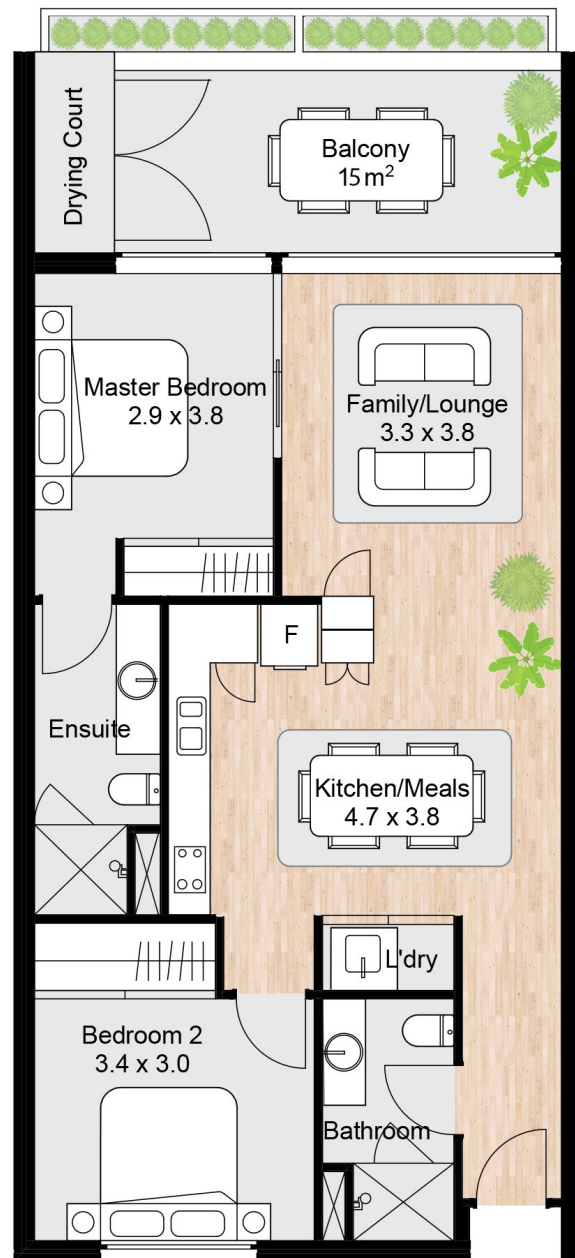
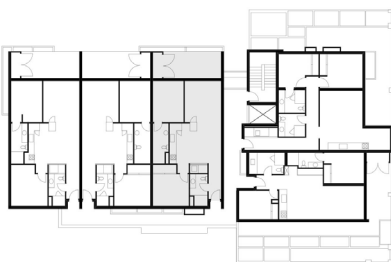
*Allocated Car Stacker Bay

FLOOR

2

COLOUR SCHEME

Black Onyx



DISCLAIMER :Variations from strata plans may apply. Furniture is indicative. Shape and configuration of living areas balconies, wall structure, doors, windows, aircon condensers and ducts may differ from those illustrated. Areas of apartment given are based on architectural measurements which varies from strata areas as different methods of measurement is applied.

UNIT 10

2 BED X 2 BATH



APARTMENT NUMBER

Unit 10

APARTMENT DETAILS

Bedroom	2
Bathroom	2
Courtyard	1
Car Bay	1
Store	1

APARTMENT AREA

Internal Living Area	85m ²
Courtyard and Planters	50m ²
Store	4m ²
Total Area	139m ²

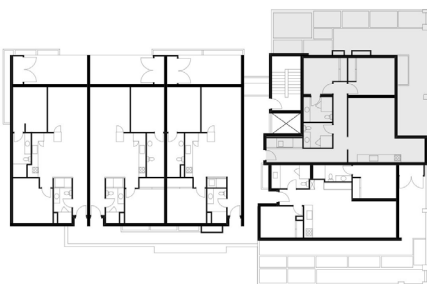
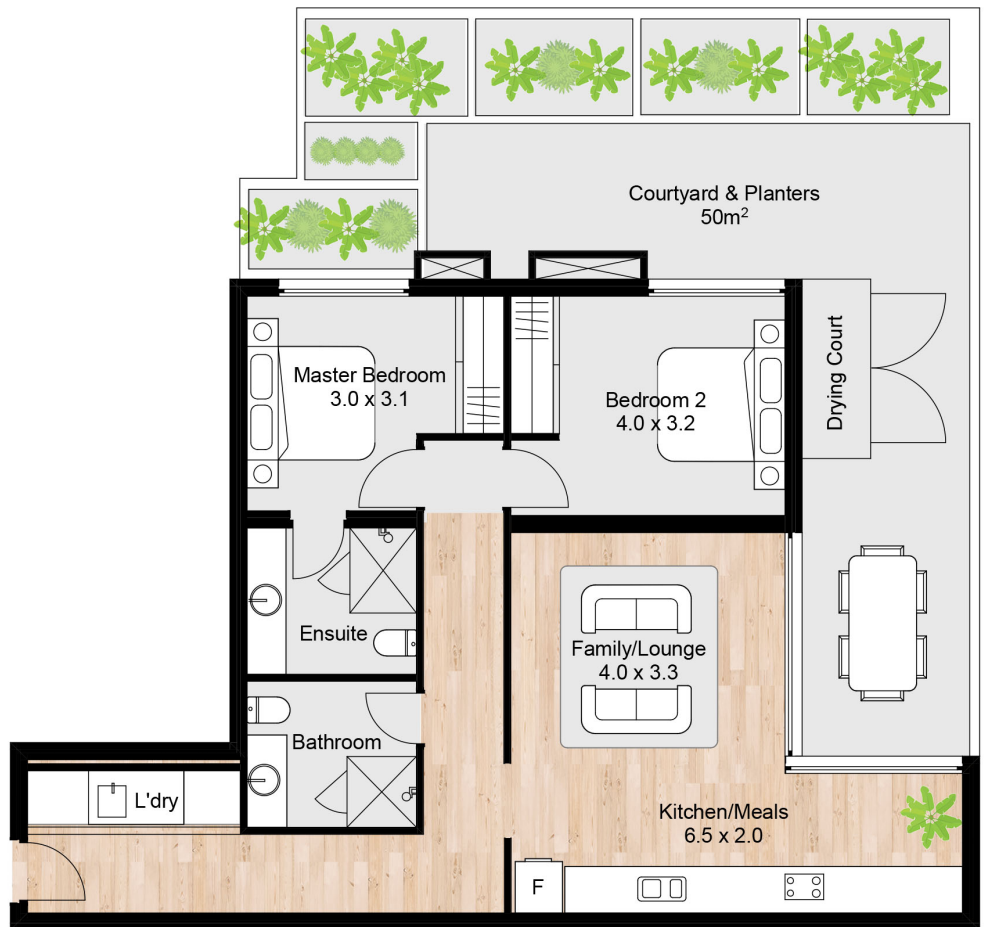
*Allocated Car Stacker Bay

FLOOR

2

COLOUR SCHEME

French Navy



DISCLAIMER :Variations from strata plans may apply. Furniture is indicative. Shape and configuration of living areas balconies, wall structure, doors, windows, aircon condensers and ducts may differ from those illustrated. Areas of apartment given are based on architectural measurements which varies from strata areas as different methods of measurement is applied.

UNIT 11

2 BED X 2 BATH



APARTMENT NUMBER

Unit 11

APARTMENT DETAILS

Bedroom	2
Bathroom	2
Courtyard	1
Car Bay	1
Store	1

APARTMENT AREA

Internal Living Area	68m ²
Courtyard and Balcony	53m ²
Store	4m ²
Total Area	125m ²

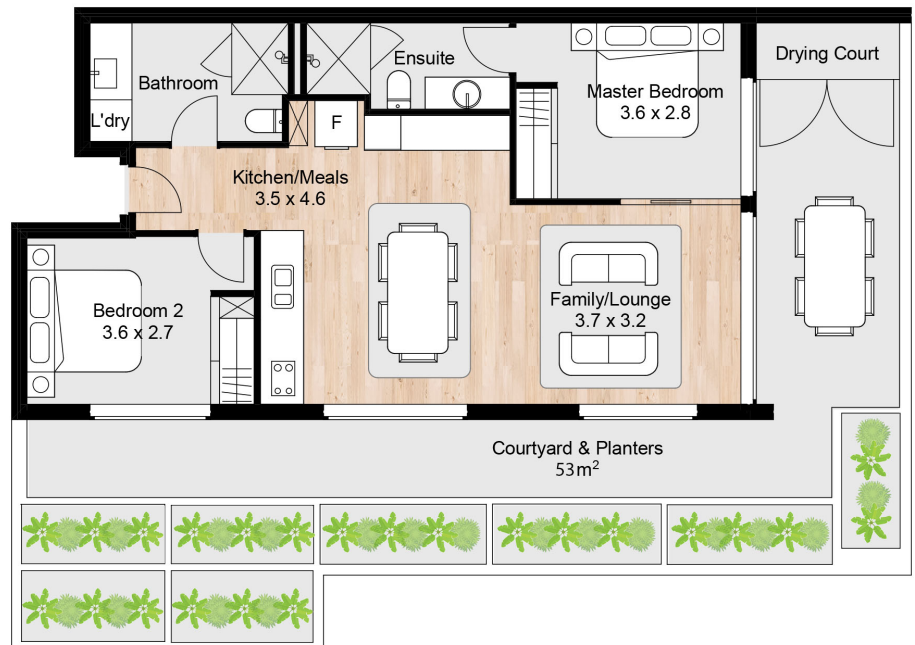
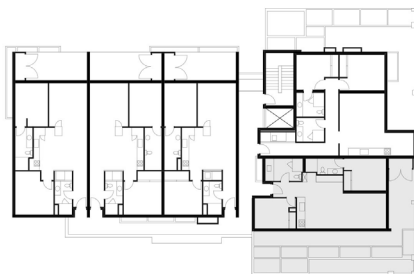
*Allocated Car Stacker Bay

FLOOR

2

COLOUR SCHEME

Black Onyx



DISCLAIMER :Variations from strata plans may apply. Furniture is indicative. Shape and configuration of living areas balconies, wall structure, doors, windows, aircon condensers and ducts may differ from those illustrated. Areas of apartment given are based on architectural measurements which varies from strata areas as different methods of measurement is applied.

UNIT 12

2 BED X 2 BATH



APARTMENT NUMBER

Unit 12

APARTMENT DETAILS

Bedroom	2
Bathroom	2
Balcony	1
Car Bay	1
Store	1

APARTMENT AREA

Internal Living Area	74m ²
Balcony	15m ²
Store	4m ²
Total Area	93m ²

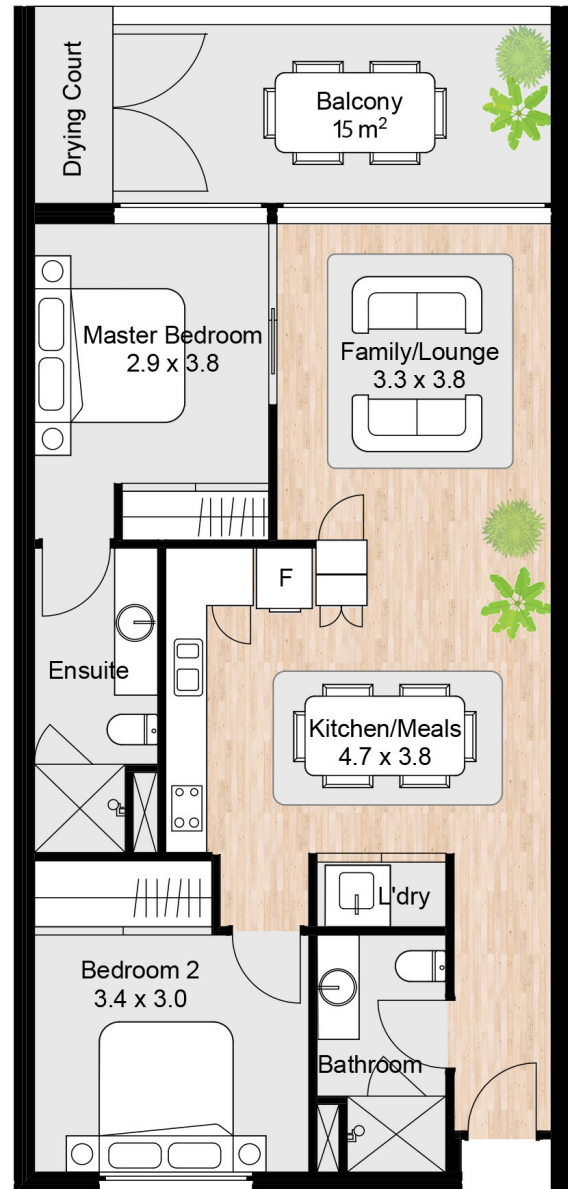
*Allocated Car Stacker Bay

FLOOR

3

COLOUR SCHEME

French Navy



DISCLAIMER :Variations from strata plans may apply. Furniture is indicative. Shape and configuration of living areas balconies, wall structure, doors, windows, aircon condensers and ducts may differ from those illustrated. Areas of apartment given are based on architectural measurements which varies from strata areas as different methods of measurement is applied.

UNIT 13

2 BED X 2 BATH



APARTMENT NUMBER

Unit 13

APARTMENT DETAILS

Bedroom	2
Bathroom	2
Balcony	1
Car Bay	1
Store	1

APARTMENT AREA

Internal Living Area	74m ²
Balcony and Planters	18m ²
Store	4m ²
Total Area	96m ²

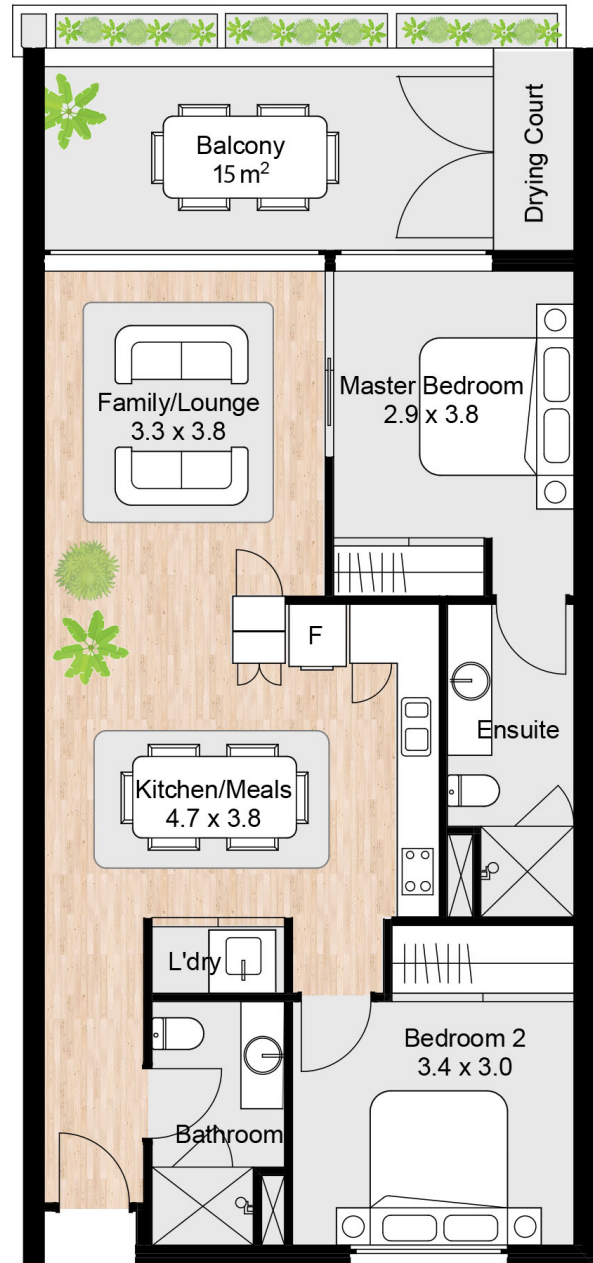
*Allocated Car Stacker Bay

FLOOR

3

COLOUR SCHEME

Black Onyx



DISCLAIMER :Variations from strata plans may apply. Furniture is indicative. Shape and configuration of living areas balconies, wall structure, doors, windows, aircon condensers and ducts may differ from those illustrated. Areas of apartment given are based on architectural measurements which varies from strata areas as different methods of measurement is applied.

UNIT 14

2 BED X 2 BATH

RESIDE
ON MONEY

APARTMENT NUMBER

Unit 14

APARTMENT DETAILS

Bedroom	2
Bathroom	2
Balcony	1
Car Bay	1
Store	1

APARTMENT AREA

Internal Living Area	74m ²
Balcony	16m ²
Store	4m ²
Total Area	94m ²

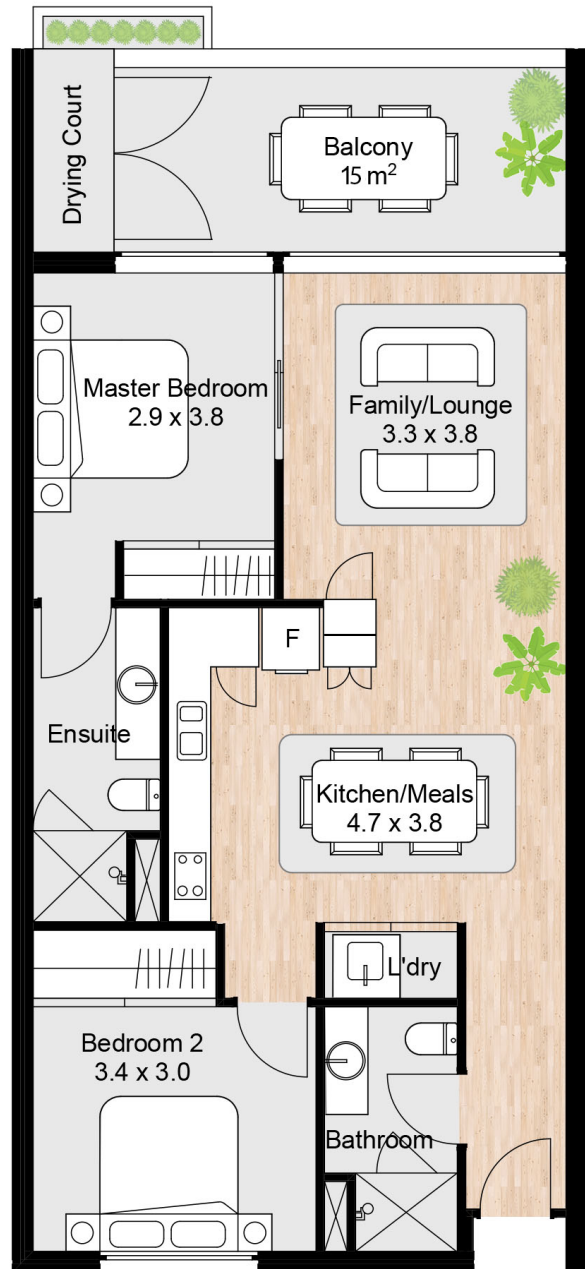
*Allocated Car Stacker Bay

FLOOR

3

COLOUR SCHEME

French Navy



DISCLAIMER :Variations from strata plans may apply. Furniture is indicative. Shape and configuration of living areas balconies, wall structure, doors, windows, aircon condensers and ducts may differ from those illustrated. Areas of apartment given are based on architectural measurements which varies from strata areas as different methods of measurement is applied.



UNIT 17

2 BED X 2 BATH



APARTMENT NUMBER

Unit 17

APARTMENT DETAILS

Bedroom	2
Bathroom	2
Balcony	1
Car Bay	1
Store	1

APARTMENT AREA

Internal Living Area	74m ²
Balcony and Planters	17m ²
Store	4m ²
Total Area	95m ²

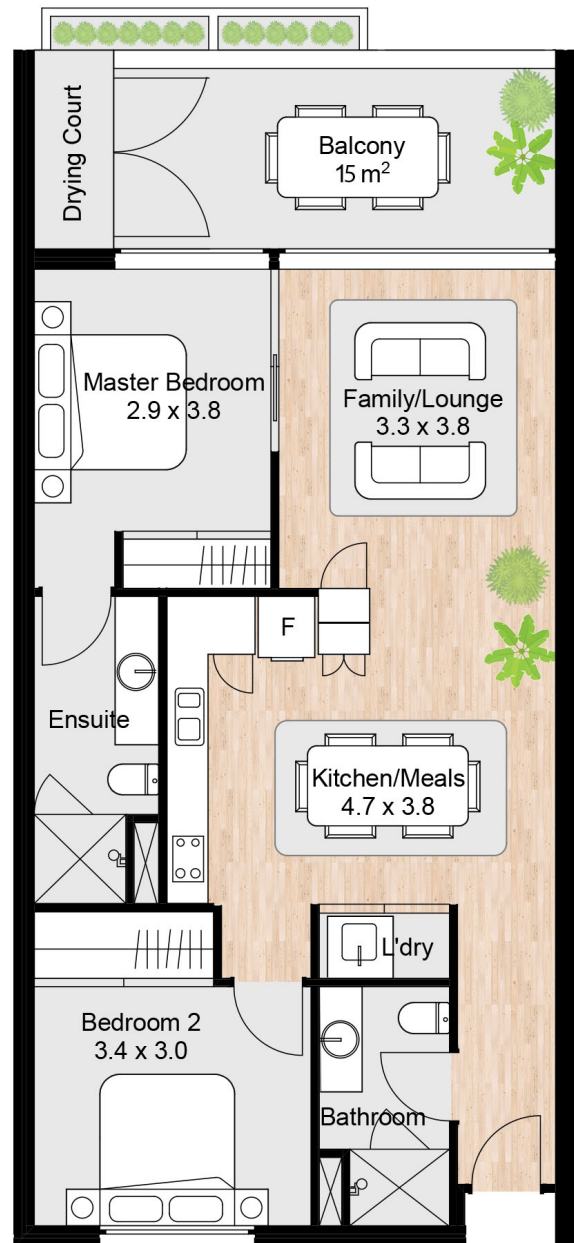
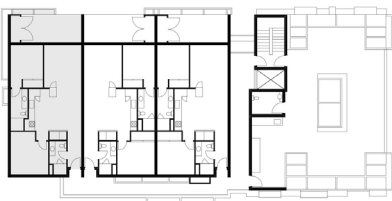
*Allocated Car Stacker Bay

FLOOR

4

COLOUR SCHEME

Black Onyx



DISCLAIMER :Variations from strata plans may apply. Furniture is indicative. Shape and configuration of living areas balconies, wall structure, doors, windows, aircon condensers and ducts may differ from those illustrated. Areas of apartment given are based on architectural measurements which varies from strata areas as different methods of measurement is applied.

UNIT 18

2 BED X 2 BATH



APARTMENT NUMBER

Unit 18

APARTMENT DETAILS

Bedroom	2
Bathroom	2
Balcony	1
Car Bay	1
Store	1

APARTMENT AREA

Internal Living Area	74m ²
Balcony and Planters	16m ²
Store	4m ²
Total Area	94m ²

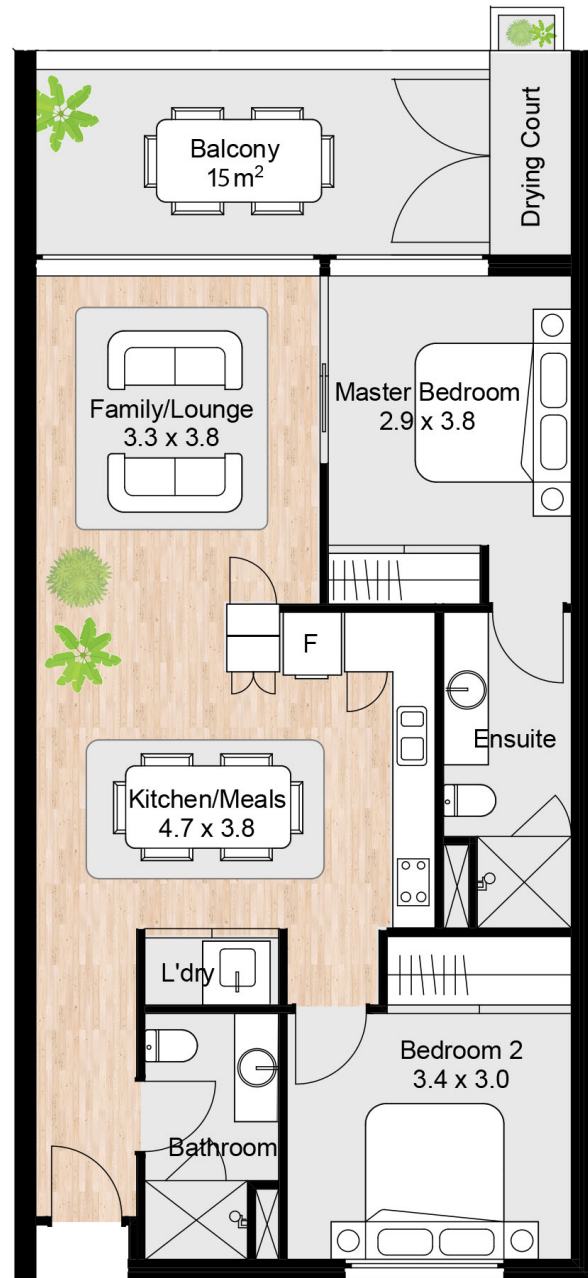
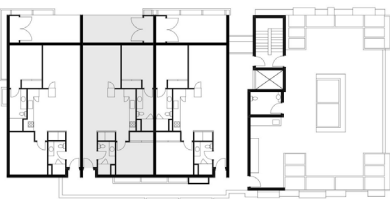
*Allocated Car Stacker Bay

FLOOR

4

COLOUR SCHEME

French Navy



DISCLAIMER :Variations from strata plans may apply. Furniture is indicative. Shape and configuration of living areas balconies, wall structure, doors, windows, aircon condensers and ducts may differ from those illustrated. Areas of apartment given are based on architectural measurements which varies from strata areas as different methods of measurement is applied.

UNIT 19

2 BED X 2 BATH



APARTMENT NUMBER

Unit 19

APARTMENT DETAILS

Bedroom	2
Bathroom	2
Balcony	1
Car Bay	1
Store	1

APARTMENT AREA

Internal Living Area	74m ²
Balcony and Planters	18m ²
Store	4m ²
Total Area	96m ²

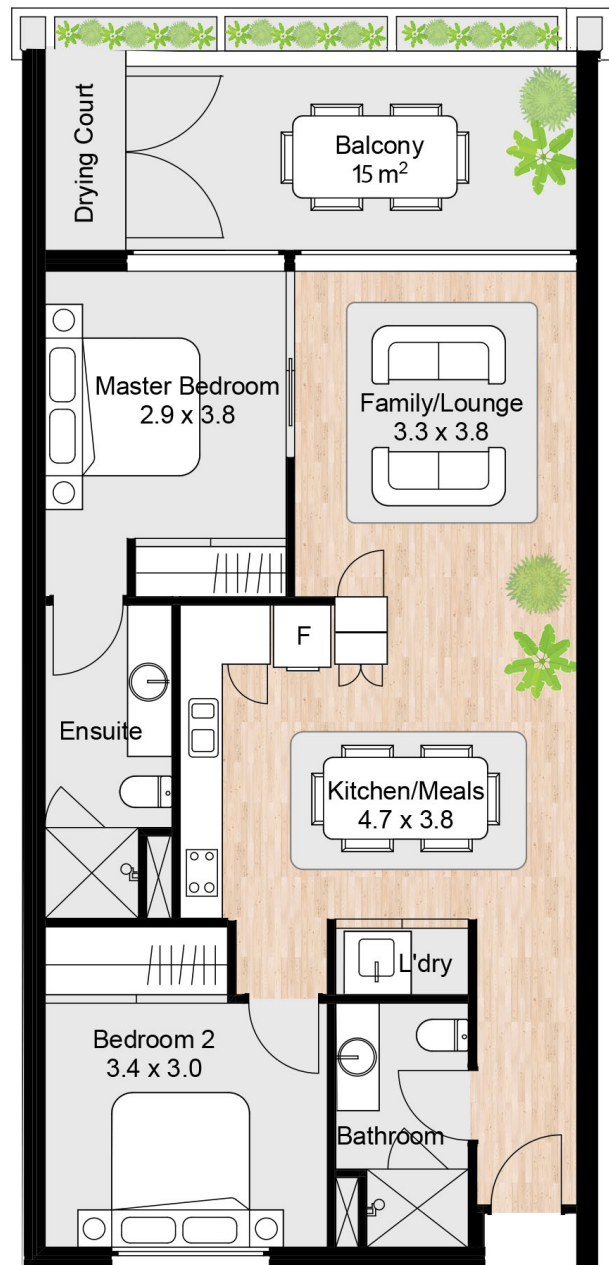
*Allocated Car Stacker Bay

FLOOR

4

COLOUR SCHEME

Black Onyx



DISCLAIMER :Variations from strata plans may apply. Furniture is indicative. Shape and configuration of living areas balconies, wall structure, doors, windows, aircon condensers and ducts may differ from those illustrated. Areas of apartment given are based on architectural measurements which varies from strata areas as different methods of measurement is applied.

UNIT 20

2 BED X 2 BATH



APARTMENT NUMBER

Unit 20

APARTMENT DETAILS

Bedroom	2
Bathroom	2
Balcony	1
Car Bay	1
Store	1

APARTMENT AREA

Internal Living Area	74m ²
Balcony	15m ²
Store	4m ²
Total Area	93m ²

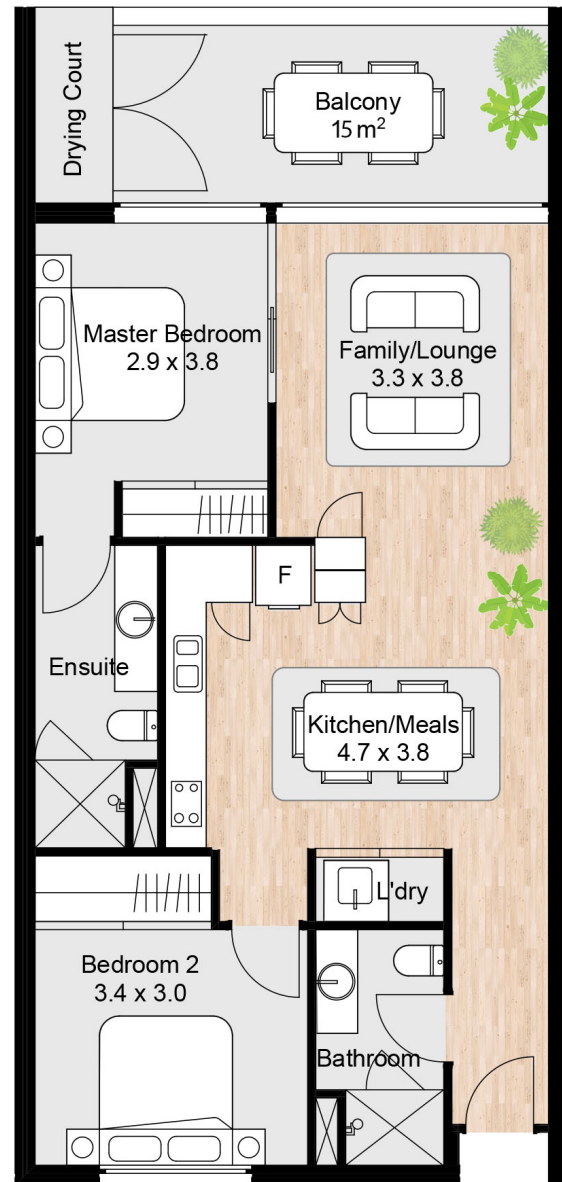
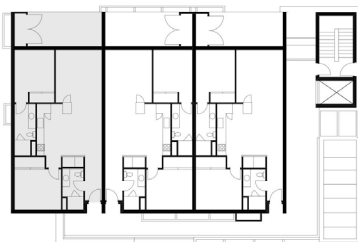
*Allocated Car Stacker Bay

FLOOR

5

COLOUR SCHEME

French Navy



DISCLAIMER :Variations from strata plans may apply. Furniture is indicative. Shape and configuration of living areas balconies, wall structure, doors, windows, aircon condensers and ducts may differ from those illustrated. Areas of apartment given are based on architectural measurements which varies from strata areas as different methods of measurement is applied.

UNIT 21

2 BED X 2 BATH



APARTMENT NUMBER

Unit 21

APARTMENT DETAILS

Bedroom	2
Bathroom	2
Balcony	1
Car Bay	1
Store	1

APARTMENT AREA

Internal Living Area	74m ²
Balcony and Planters	18m ²
Store	4m ²
Total Area	96m ²

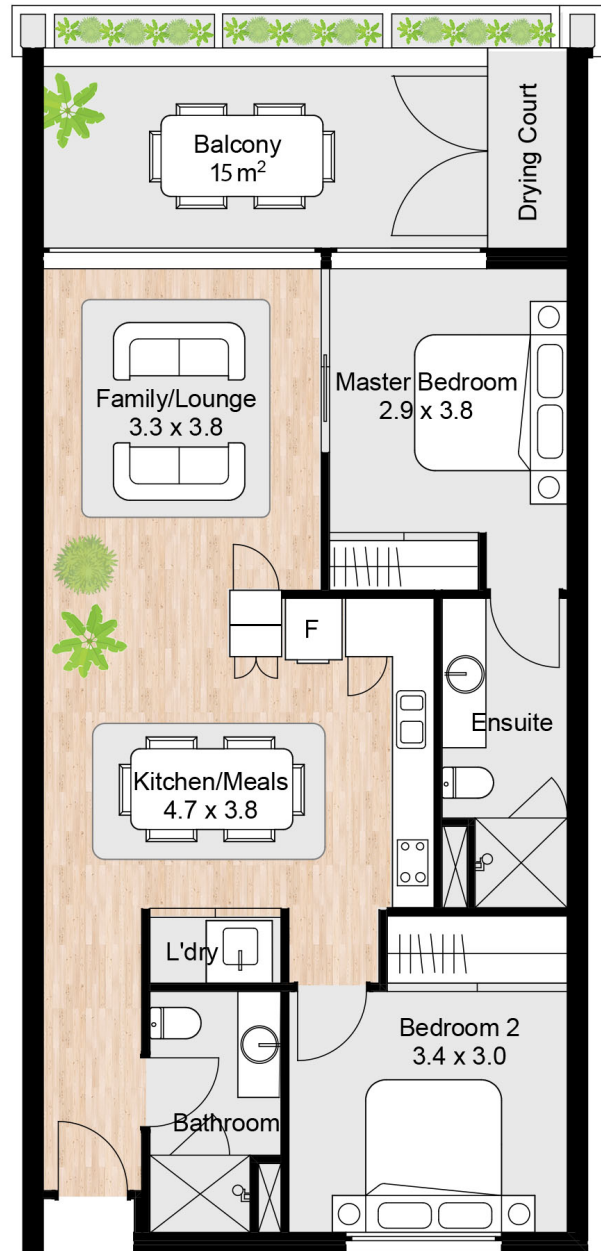
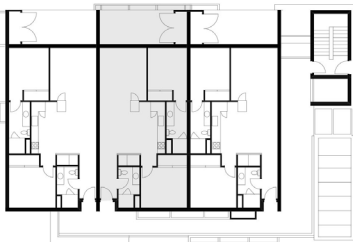
*Allocated Car Stacker Bay

FLOOR

5

COLOUR SCHEME

Black Onyx



DISCLAIMER :Variations from strata plans may apply. Furniture is indicative. Shape and configuration of living areas balconies, wall structure, doors, windows, aircon condensers and ducts may differ from those illustrated. Areas of apartment given are based on architectural measurements which varies from strata areas as different methods of measurement is applied.

UNIT 22

2 BED X 2 BATH



APARTMENT NUMBER

Unit 22

APARTMENT DETAILS

Bedroom	2
Bathroom	2
Balcony	1
Car Bay	1
Store	1

APARTMENT AREA

Internal Living Area	74m ²
Balcony and Planters	16m ²
Store	4m ²
Total Area	94m ²

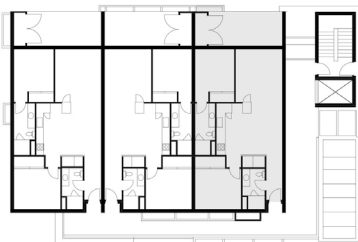
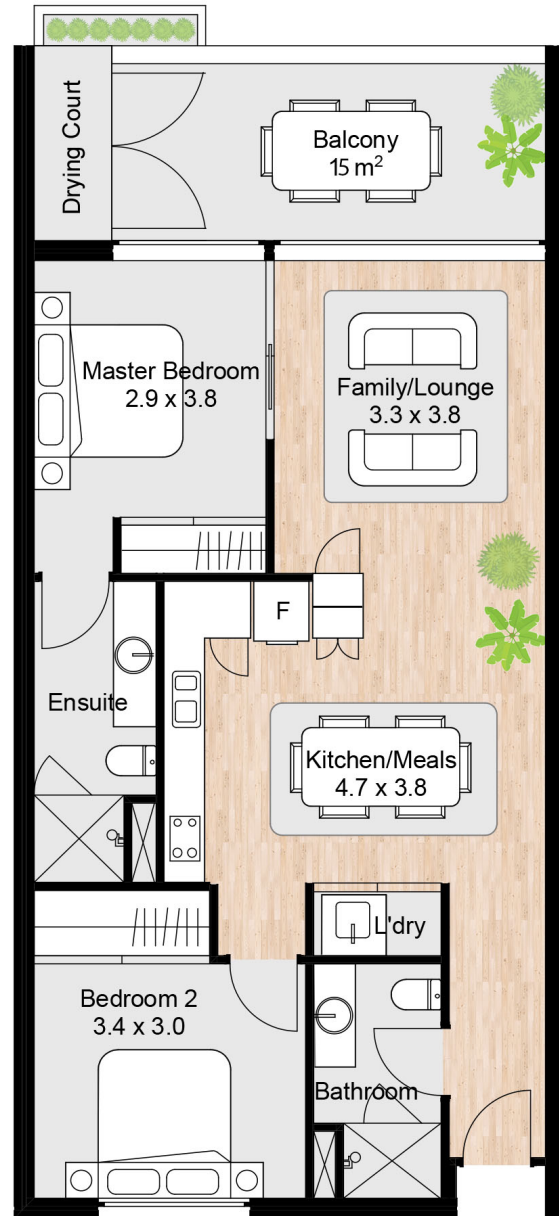
*Allocated Car Stacker Bay

FLOOR

5

COLOUR SCHEME

French Navy



DISCLAIMER :Variations from strata plans may apply. Furniture is indicative. Shape and configuration of living areas balconies, wall structure, doors, windows, aircon condensers and ducts may differ from those illustrated. Areas of apartment given are based on architectural measurements which varies from strata areas as different methods of measurement is applied.



OTHER PROJECTS BY GRIFFIN

Western Australia
 Coastal Edge, Coogee
 Abode, Como
 Parkview, Como
 Lucida, Como
 Loft Haus, Leederville
 204 Walcott, Menora
 Cube on Canning, Melville
 Reside on Money, Northbridge
 The Residence, Scarborough
 One54 Tuart, Tuart Hill
 Butler Medical Centre, Butler
 Hamilton Hill Medical Centre, Rockingham

Victoria
 Camberwell Apartments, Camberwell
 Maple on Hastings, Hawthorne East

Adelaide
 Calibre, Glenelg
 Plympton Apartments, Plympton

New South Wales
 Mosman, Sydney

Queensland
 Paddington, Brisbane

DEVELOPMENT TEAM

Powered by

Griffin
 griffin-group.com.au

Architect

FratelleGroup
 architecture | interiors | urban design
 fratellegroup.com.au

Built by

JCM / PROPERTY GROUP
 jcm.net.au

resideonmoney.com.au
 1300 777 797